

Milken Institute School
of Public Health

THE GEORGE WASHINGTON UNIVERSITY

REVOLUTIONARY PUBLIC HEALTH

20 | IMPACT
24 | REPORT

2024



The mission of the George Washington University is to educate individuals in liberal arts, languages, sciences, business, professions, and other careers and to conduct scholarly research and publish the findings of such research.



Cover Photos: Bela Mahtabfar, MPH '24 (center)
Jonathan Lancaster, MPH 24' (right)

LETTER FROM THE DEAN

DEAR FRIENDS, COLLEAGUES, AND SUPPORTERS,

This past year has been a defining moment for public health, and we have much to celebrate at the Milken Institute School of Public Health (Milken Institute SPH). Our school continues to be recognized among the best in the nation, achieving #12 overall in national rankings, with Health Policy and Management ranked #5. Our continued rise in national rankings reflects the excellence of our faculty, students, staff, and alumni who are leading the way in policy, research, and practice.

Public health is about action. It is about confronting the foundational drivers of health-structural inequities, access to care, and the social determinants that shape well-being. Throughout this year, we have seen the far-reaching effects of climate change on vulnerable populations, the continued challenges of emerging infectious diseases, and the urgent need for stronger health systems worldwide. We have also seen the power of policy and advocacy in advancing public health priorities, from reproductive rights to environmental protections.

Our research and impact have never been stronger. With \$91 million in total research expenditures, our school remains among the top three public health schools in NIH funding. Faculty published more than 400 peer-reviewed papers while our students engaged in groundbreaking research, presenting a record 133 projects at Research Day. These milestones highlight the depth of our contributions to solving pressing health challenges.

We also recognize that public health is fundamentally about people. Our 15,000+ alumni continue to make significant contributions worldwide, and we are honored to recognize Joseph Wright, MPH '90, as the 2023 Spirit of GW Alumni of the Year for his leadership and advocacy for children affected by gun violence. Our alumni network is a testament to the lasting impact of a Milken Institute SPH

education and the vital role our graduates play in shaping public health policies and programs.

Looking ahead, our commitment remains steadfast. The challenges before us are great, but so too is our resolve. The work of public health requires collaboration, creativity, and an unwavering dedication to the idea that a healthier world is possible. As we close this chapter and prepare for the future, I want to express my deepest gratitude to our students, faculty, staff, alumni, and partners who make our mission a reality every day.

Public health is a call to action. It is a movement. And we are proud to be at the forefront of this work. Thank you for your commitment, passion, and belief in the power of public health.

With gratitude,



Lynn R. Goldman, MD, MS, MPH
Michael and Lori Milken Dean
Milken Institute School of Public Health
The George Washington University



PUBLIC HEALTH IN ACTION:


2023-2024
YEAR IN REVIEW



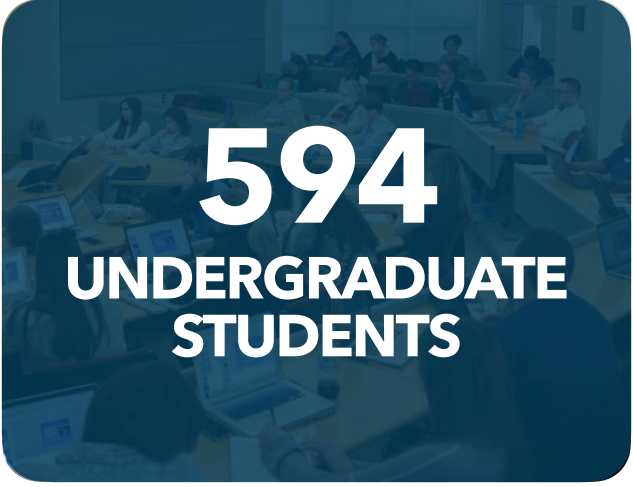
**137 PhD
STUDENTS**



**137 DrPH
STUDENTS**



**1,935
GRADUATE
STUDENTS**



**594
UNDERGRADUATE
STUDENTS**



2,800 TOTAL STUDENTS



MPH ENROLLMENT: 1,855

With the largest MPH program in the world, our enrollment solidifies us as a global leader in public health education and innovation.

DrPH PROGRAM SOARS AT MILKEN INSTITUTE SPH

The DrPH program has seen significant growth, offering strong global partnerships, hands-on dissertation opportunities, and practicum experiences. With faculty support and a structured process, full-time students complete the program in under three years. Focusing on flexibility, collaboration, and real-world impact, it prepares graduates to shape public health policy and address global challenges.

"This past year has been truly exceptional for our DrPH program," said Gene Migliaccio, Associate Dean for Applied Public Health. "We've seen tremendous growth, not only in the number of students but also in the caliber of their practice-based research and contributions to the public health field. Our students and faculty have tackled some of the most pressing global health challenges, and their innovative solutions are making a real-world impact."

NEW MICROMASTERS PROGRAM LAUNCHED: 1,887 LEARNERS

Milken Institute SPH and edX, a leading global online learning platform, launched a groundbreaking MicroMasters program focused on maternal and child health through the Milken Institute SPH in 2023. This innovative initiative is now part of the school's expanded online offerings, including an online Doctorate of Public Health (DrPH@GW), Master of Health Administration (MHA@GW) and Master of Public Health (MPH@GW) providing learners with flexible, high-quality educational opportunities, from a top-ranked school of public health.

This MicroMasters program provides learners with an opportunity to acquire this standalone credential with an option to further pursue an advanced degree. Qualified applicants who have earned the MicroMasters may apply that credential toward a GW's Master of Public Health (MPH) degree if admitted, creating a seamless, stackable degree pathway. The success of this program reflects a growing demand for accessible, impactful public health education, with a total of 1,887 participants registered for one or more units of the MCH MicroMasters offering in the first cohort.

Mandy Cohen,
former Director of the CDC



The school conferred 892 degrees in the 2023-2024 academic year. The ceremony featured an inspiring keynote address by Dr. Mandy K. Cohen, the former Director of the CDC.

CEPH REACCREDITATION

"We are proud to be successfully re-accredited by the Council on Education for Public Health (CEPH) for the maximum allowable seven years through 2031. The rigorous re-accreditation process highlights the strength of our curriculum, faculty, and community impact. It is a testament to our dedication to delivering the highest standard of education, research, and service in public health and

healthcare leadership. We continuously strive to innovate and improve our programs, ensuring our graduates are well-equipped to tackle the most pressing public health and healthcare leadership challenges."

– Jane Hyatt Thorpe, Senior Associate Dean for Academic, Student & Faculty Affairs



Dr. Rebecca Clifton

RESEARCH AND GRANTS

Total Research Expenditures: \$91 million

Largest Research Gift: \$11,626,408 awarded to Rebecca Clifton in the Biostatistics Center for her NIH-sponsored proposal, Adjunctive Azithromycin Prophylaxis for Scheduled/Pre-labor Cesarean Delivery.

Our grant acquisition is outstanding, placing us among the top 3 public health schools in the nation for NIH funding.

400+ PAPERS PUBLISHED

Faculty Research Impact

Peer-reviewed Publications: 400+ papers published by faculty members in FY 2024, contributing to the school's research prestige.



2025 RANKINGS

The school continues to be a leader in public health education and research, achieving strong national rankings (U.S. News and World Report) in several areas:

- Milken Institute SPH: #12
- Biostatistics and Bioinformatics: #19
- Environmental and Occupational Health: #11
- Epidemiology: #16
- Health Policy and Management: #5
- Prevention and Community Health: #14

29 CENTERS AND INSTITUTES

The school is home to 29 centers and institutes, leading research and initiatives in critical areas of public health, further solidifying our commitment to impactful work locally and globally.



**+2,500
PRACTICE
PARTNERS
WORLDWIDE**



661
**STUDENTS
PARTICIPATED IN THE
PRACTICE EXPERIENCE**

"Our practicum experience supports a broad range of students across all public health concentrations at dynamic industry-leading organizations, preparing our students to be the next generation of leaders in the public health field."

Sydney Law
Director, Applied Public Health

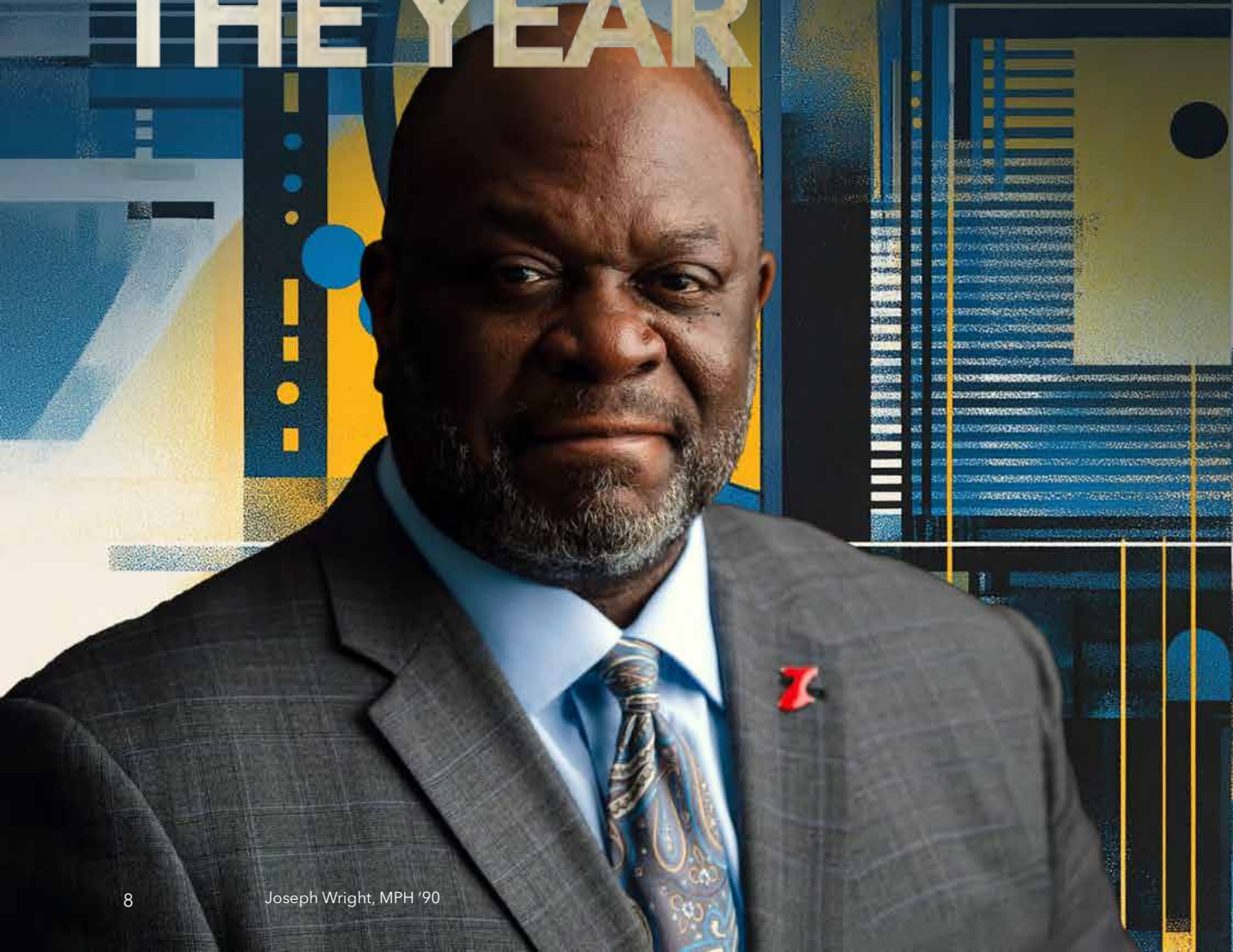


ALUMNI NETWORK

With over 15,000 alumni worldwide, the Milken Institute SPH is proud of its global reach and the tremendous impact of its graduates in public health fields.

Notably, Joseph Wright, MPH '90, the 2023 Spirit of GW Alumni of the Year, exemplifies this commitment through his work as a public health leader advocating for the safety and well-being of children impacted by gun violence.

2023 SPIRIT OF GW ALUMNI OF THE YEAR



NEW FACULTY

PRAMITA BAGCHI

Biostatistics and Bioinformatics
Assistant Professor



GABRIELLE HEADRICK

Exercise and Nutrition Sciences
Assistant Professor



CARMEN ORTEGA-SANTOS

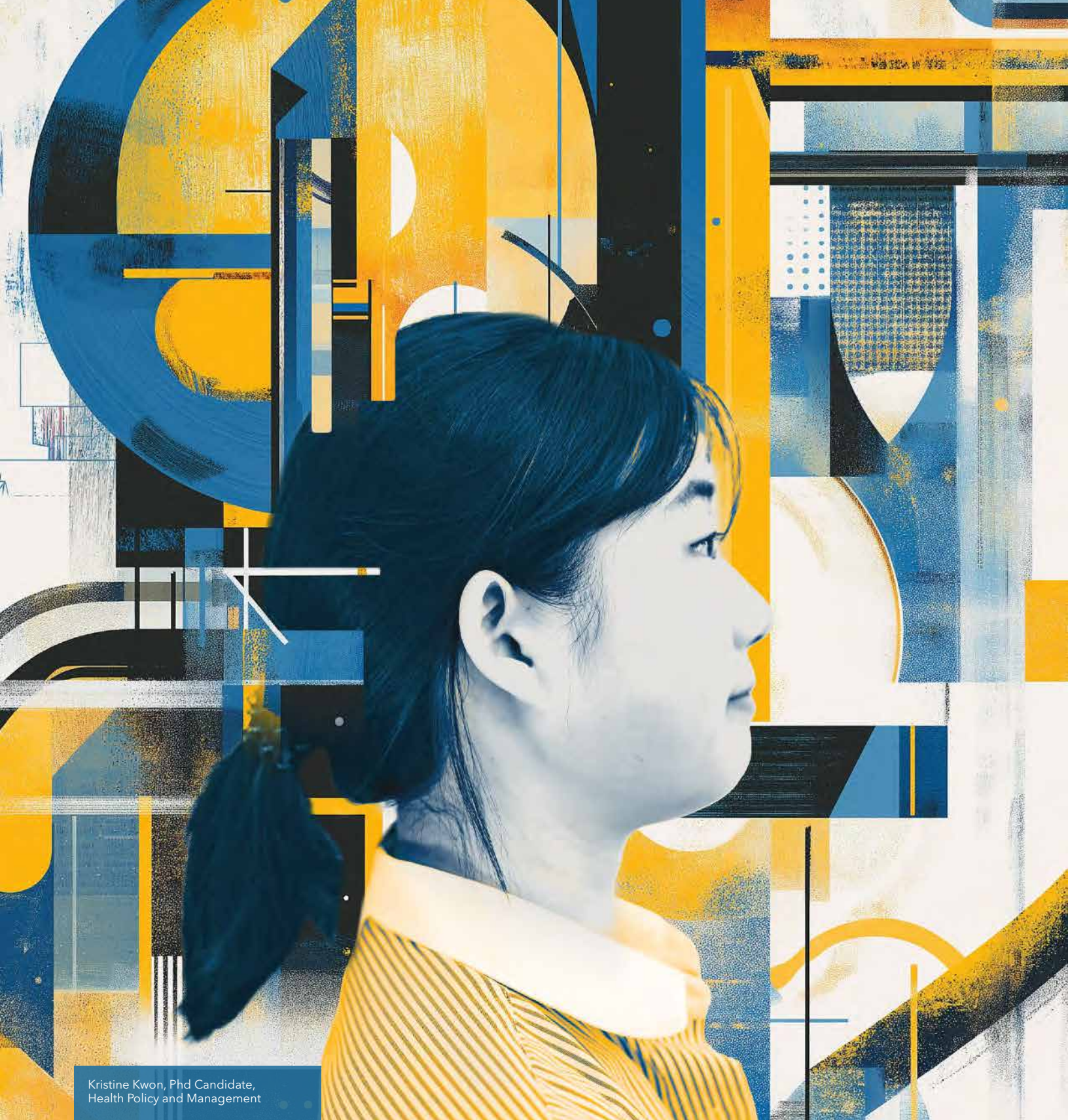
Exercise and Nutrition Sciences
Assistant Professor



KELVIN FONG

Environmental and Occupational Health
Assistant Professor





Kristine Kwon, Phd Candidate,
Health Policy and Management

STATE OF RESEARCH

FY24 RESEARCH: A YEAR OF BREAKTHROUGHS, BIG WINS, AND BOLD IDEAS

The Milken Institute SPH is proud to reflect on a year of groundbreaking research, significant grants, and growing student involvement. From impactful faculty-led projects to expanding global partnerships, our school continues to push the boundaries of public health research.

RESEARCH FUNDING HITS NEW HIGHS

FY24 marked another successful year for research funding at the school. One of the most significant awards went to Rebecca Clifton in the Department of Biostatistics and Bioinformatics and a member of the GW Biostatistics Center. Clifton's project, Adjunctive Azithromycin Prophylaxis for Scheduled/Pre-labor Cesarean Delivery, received an impressive \$11.6 million from the National Institutes of Health (NIH). This research aims to improve health outcomes for mothers and babies during cesarean deliveries.

NOTABLE MILESTONES IN FY24

In addition to funding achievements, several critical milestones from the past year demonstrate the diversity and breadth of the school's research impact:

Gill-Lebovic Center Launch: In 2023, the Gill-Lebovic Center for Community Health in the Caribbean and Latin America officially opened, focused on improving health in underserved regions. "The launch of the Gill-Lebovic Center for Community Health in the Caribbean and Latin America marks an exciting new chapter in our mission to address health disparities in some of the world's most underserved regions," said Wolfgang Munar, Director of the Gill-Lebovic Center for the Caribbean and Latin America and Associate Professor, Department of Global Health. "By focusing on primary healthcare systems, the Center is driving the evolution of people-centered health services across the region through research and capacity development. This initiative embodies our vision of fostering sustainable health solutions that are culturally informed and globally impactful."

Antibiotic Research Sparks Policy Change: Research from our Antibiotic Resistance Action Center, led by Dr. Lance B. Price, led to a significant USDA policy change in 2024. The research revealed that some beef labeled "raised without antibiotics" contained antibiotics, prompting the USDA to revise its guidelines.

Agents of Change: Tackling Violence Against Women: In FY24, Dr. Mary Ellsberg, director of the Global Women's Institute and faculty in Milken Institute SPH Department of Global Health, advanced critical research on violence against women and girls (VAWG). Building on her landmark work in Nicaragua and global contributions, Ellsberg's Empowered Aid initiative focused on reducing exploitation risks for women and girls in conflict zones, providing practical solutions to ensure safer aid distribution. This vital research continues to shape global health policies and promote social change.

On the global stage, faculty also partnered with international organizations to improve vaccine distribution in conflict-affected and under-immunized areas, furthering our mission to advance public health worldwide.

"Our faculty are consistently delivering high-quality, high-impact research. It's rewarding to see their work recognized and supported at this level, and it allows us to address some of the most critical health challenges today."

Dr. Adnan Hyder
Senior Associate Dean for Research & Innovation
Professor, Department of Global Health

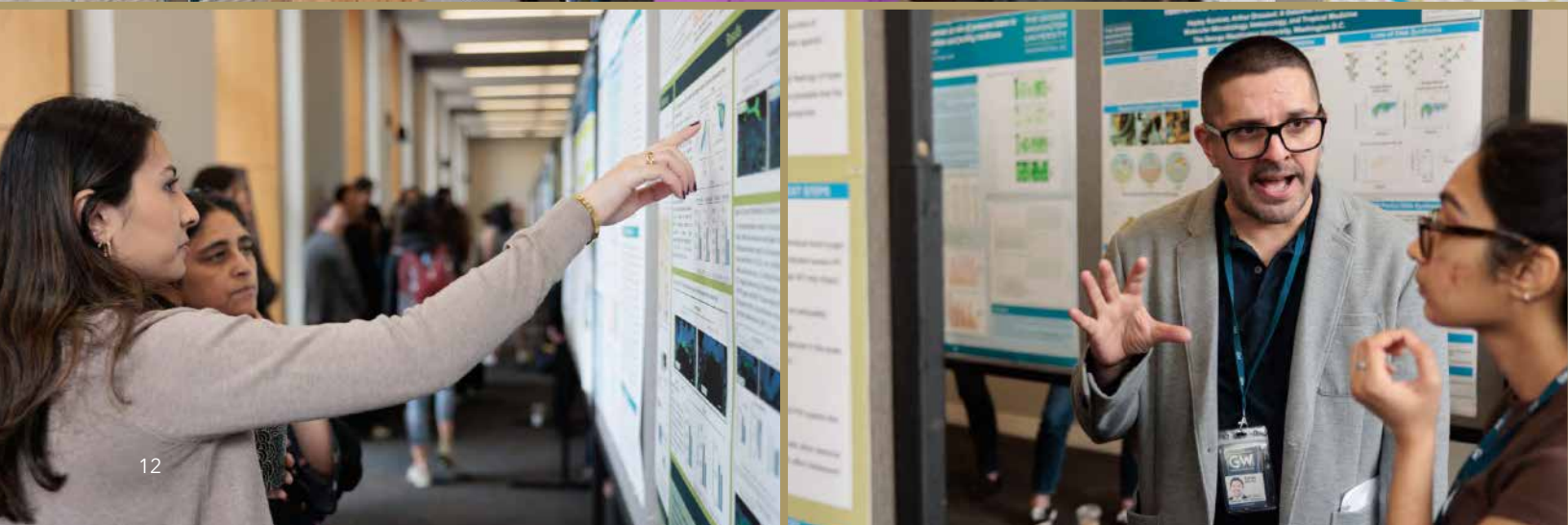


RESEARCH DAY 2024

Our students also took center stage this year, particularly during Research Day 2024, which saw a 48% increase in participation from the previous year. A total of 133 presentations were delivered by undergraduates, master's students, doctoral candidates, and research staff. *"It's incredible to see so many students and early-career researchers sharing their ideas and findings," said Hyder. "They are the future of public health, and their contributions are essential to our school's ongoing success."*

Dr. Adnan Hyder

Senior Associate Dean for Research & Innovation
Professor, Department of Global Health



LOOKING AHEAD

This was a banner year for the Milken Institute SPH, filled with remarkable research achievements and impactful contributions to public health. As the school looks forward, Dr. Hyder shared his optimism for the future: "This year's accomplishments are just the beginning. With the continued support of our community, we are poised to achieve even greater successes in the years to come."

PROFESSOR KATHLEEN ROCHE AWARDED \$3.88 MILLION NIH GRANT TO STUDY LATINX YOUTH MENTAL HEALTH

Professor Kathleen Roche of the Milken Institute SPH has been awarded a 5-year, \$3.88 million R01 grant from the National Institute of Mental Health (NIMH). Partnering with Dr. Margaret Caughy of the University of Georgia and Dr. Esther Calzada of the University of Texas at Austin, Roche will analyze data from five Latinx cohort studies to examine how societal stressors impact mental health for U.S. Latinx youth, tracking them from early childhood to young adulthood.

The study will also utilize Twitter (X) data to explore the effects of anti-immigrant rhetoric since 2010 on Latinx families. This innovative approach aims to reveal how shifts in public discourse affect mental health trajectories.

In related research, Dr. Roche and her colleagues, including GW alumna Roushanac Partovi, recently published a study in JAMA Pediatrics that examined the impacts of immigration stressors on Latinx teenagers. Their findings show that mothers' fears of deportation and youths' experiences with family member detentions contribute to increased mental health issues and strained parent-child relationships. This research highlights the significant impact immigration policies have on family dynamics and youth well-being.



RESEARCH DAY 2024 AWARDEES

UNDERGRADUATE

Bailey Moore

An Approach to Applying an Intersectional Lens to Black Women's Reproductive and Sexual Health

MASTERS

Griffin Barriss

Assessing Country Readiness Over Time: Mapping Change Between Editions of the International Health Regulations (2005) Joint External Evaluation (JEE) Tool

DOCTORAL

Brendan Fries

A Cross-Sectional Study of the Association Between Insecticide Treated Bed Net Use and Malaria Prevalence in Sierra Leon.

POST DOC

Lauryn King

The Next Closest Step to Having Control Over My Own Body: Adolescent and Young Adult Contraception Decision Making Post Dobbs

GLOBAL WOMEN'S INSTITUTE PRIZE

Bailey Moore

An Approach to Applying an Intersectional Lens to Black Women's Reproductive and Sexual Health

Lauryn King

The Next Closest Step to Having Control Over my Own Body: Adolescent and Young Adult Contraception Decision Making Post Dobbs





Kristen Clarke, MPH, Health Policy and Management (left)
Sierra Acker, MPH '26 Candidate, Prevention and Community Health (right)

INCLUSIVE EXCELLENCE

BUILDING A CULTURE OF INCLUSIVE EXCELLENCE AT THE MILKEN INSTITUTE SPH

The Milken Institute SPH is taking bold steps to promote diversity, equity, and inclusion (DEI) under the leadership of Rachel Thomas, the new Director of Diversity and Inclusion. Thomas emphasizes, "Our goal is to support a culture where everyone feels seen, heard, and valued as we work toward advancing health equity in meaningful ways." With this commitment, our school has expanded DEI efforts through events, research, and leadership appointments.

Wendy Ellis, the newly appointed Director of the GW Institute for Racial, Ethnic, and Socioeconomic Equity, is at the forefront of research addressing the social determinants of health. "We must go beyond addressing the symptoms of inequity and directly confront the systems that perpetuate racial and socioeconomic disparities," said Ellis. Her work continues to drive

meaningful change by developing innovative policy solutions to address structural inequities.

As part of its commitment to fostering a culture of belonging, GWSPH launched its Inclusive Excellence Days, providing opportunities for dialogue and learning. In November 2023, Dr. Anushree Vichare delivered a compelling talk titled "Mirror, Mirror on the Wall: Do You See Them All?" that focused on the importance of a diverse public health workforce and its impact on health equity. In March 2024, Dr. Kirsten Bibbins-Domingo, Editor-in-Chief of The Journal of the American Medical Association, led the second Inclusive Excellence Day, exploring the role of inclusivity in scientific publishing and how diverse voices lead to more equitable healthcare solutions.

Through the leadership of figures like Thomas and Ellis, as well as initiatives such as Inclusive Excellence Days, the school is making DEI central to its mission, ensuring that equity is woven into all aspects of public health education and research.



I HEART MY STORY: GWSPH DIVERSITY CELEBRATED IDENTITY AND INCLUSION

In 2024, the "I Heart My Story: GWSPH Diversity" exhibit brought personal narratives to the forefront, highlighting the strength, challenges, and resilience within the Milken Institute SPH community. Through portraits and first-person reflections, students, faculty, staff, and alumni shared their lived experiences, fostering deeper connections and a sense of belonging.

Inspired by Humans of New York, the initiative, led by Dr. Wanda Nicholson, Professor, Prevention and Community Health and former Senior Associate Dean for Diversity, Equity, and Inclusion, underscored the power of storytelling in shaping inclusive spaces. By amplifying diverse voices, the exhibit reinforced the school's commitment to equity, understanding, and the beauty of a shared community.



Nadia Bey, MPH '25 Candidate,
Health Policy and Management



Kristen Rodrigues, MPH '25 Candidate,
Prevention and Community Health

BIOSTATISTICS AND BIOINFORMATICS

IMPACT: THE DEPARTMENT OF BIOSTATISTICS AND BIOINFORMATICS

The Department of Biostatistics and Bioinformatics (DBB) is dedicated to conducting research that has a direct impact on improving public health. The department's work helps to answer important questions about the prevention, treatment, and management of diseases such as diabetes, Alzheimer's, and COVID-19. Through long-term studies, clinical trials, and collaborations with other experts, the department generates findings that guide healthcare decisions and policies. In addition to advancing scientific knowledge, we are also focused on training the next generation of researchers who will continue to make a difference in the field of public health.

RESEARCH YIELDS RESULTS AND RECOGNITION

Led by professors Barbara Braffett and Ionut Bebu, researchers are continuing to follow up with the surviving cohort of 87% of the Diabetes Control and Complications Trial/Epidemiology of Diabetes Interventions and Complications study. The study marked its 40th anniversary with a series of presentations at the American Diabetes Association and the European Association for the Study of Diabetes, and with a special issue of *Diabetes Care*.

The ongoing project has resulted in 376 publications, including nine in the *New England Journal of Medicine*.

The Glycemia Reduction Approaches in Diabetes: A Comparative Effectiveness Study research team published a special issue of *Diabetes Care*. Co-authors include DBB Professors John Lachin, Mamoun Younes, Ionut Bebu, Pritha Ghosh, Nicole Butera, Sam Rosin, and doctoral student Wendy Wen.

The Diabetes Prevention Program Outcomes Study, led by Professor Marinella Tempresa, marked its 30th year. It recently expanded two studies – an Alzheimer's disease project and a related dementia project. The follow-up of the participants in the original clinical trial, which provided the basis for the National Diabetes Prevention Program, was cited by the Federal Coordinating Council for Comparative Effectiveness Research in a report to the US president and Congress.

A Biostatistics Center collaboration with the NIH Clinical Center received the 2023 COVID-19 response award, recognizing extraordinary efforts to counter the COVID-19 crisis.

Professor Guoqing Diao and doctoral student Shanshan Liu were part of the research team.

The Antibacterial Resistance Leadership Group research team completed the randomized clinical trial of dalbavancin for the treatment of *S. aureus* bacteremia and conducted dose selection in the randomized, double-blind, placebo-controlled trial of phage therapy in persons with cystic fibrosis colonized with *Pseudomonas aeruginosa*.

"Through our long-term research and innovative studies, we are helping to solve some of the most pressing public health problems facing the world today. As leaders in our emerging and increasingly relevant field, we also provide exciting opportunities for the next generation of public health professionals."

Scott Evans
Director of the Biostatistics Center,
Professor and Founding Chair, Department
of Biostatistics and Bioinformatics

TRAINING THE NEXT GENERATION

Last year, Professor Ali Rahnavard and his team laid the groundwork for the new Bachelor of Science Program in Health Data Science. Ten students are currently enrolled in the program, launched in fall 2024.

Last year marked the launch of the **Expanding the Pipeline to Graduate Research in Alzheimer's Disease and Related Dementias** Program, a fully-funded eight-week summer education and research training opportunity that encourages undergraduate students from diverse and underrepresented communities to pursue advanced studies and careers in the area of Alzheimer's Disease and related dementias. The first cohort of 10 scholars have since completed the program. Two went on to prestigious NIH Postbac positions, conducting two years of research in the NIH Intramural Research Program. Four scholars presented the group's research at the Gerontological Society of America conference in Tampa, Florida. The five-year program is led by Professor Adam Ciarleglio.

DBB doctoral students have published papers and received recognition at major professional meetings or initiatives. Overall, doctoral students published 14 papers in journals such as *Clinical Infectious Diseases*, *Nature Communications*, and *JAMA Network Open*, and made 15 presentations at professional meetings during the past year.



Grace Chen, Graduate Research Assistant (left)
Amanda Kikonyogo, MPH '26 Candidate, BSPH '24 (center)
Julia Blouin, PhD Candidate, Exercise Physiology and Applied Nutrition (right)

FACULTY HIGHLIGHTS

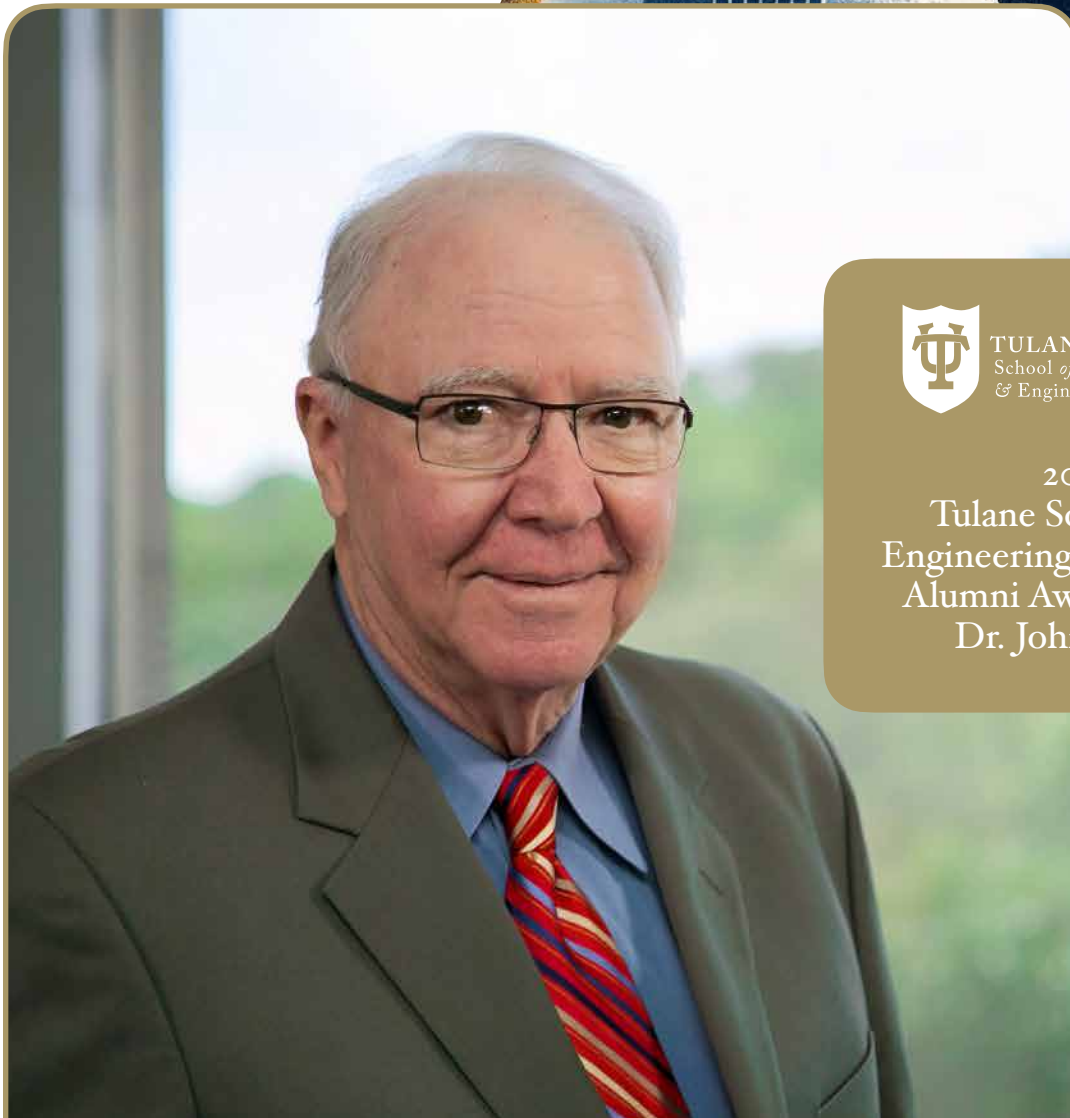
John Lachin, who was recently named Emeritus Professor, received the 2024 Tulane Science and Engineering Outstanding Alumni Award.

Professor Scott Evans, Biostatistics Center Director, was inducted as the 44th president of the Society for Clinical Trials.

The American Statistical Association recognized Guoqing Diao and collaborators at the University of North Carolina at Chapel Hill, the University of Connecticut, the National Cancer Institute, and Merck, with the prestigious Statistical Partnerships Among Academe, Industry, and Government Award for the *"depth, breadth, and statistical rigor of their collaboration and its impact on the conduct of clinical trials."*

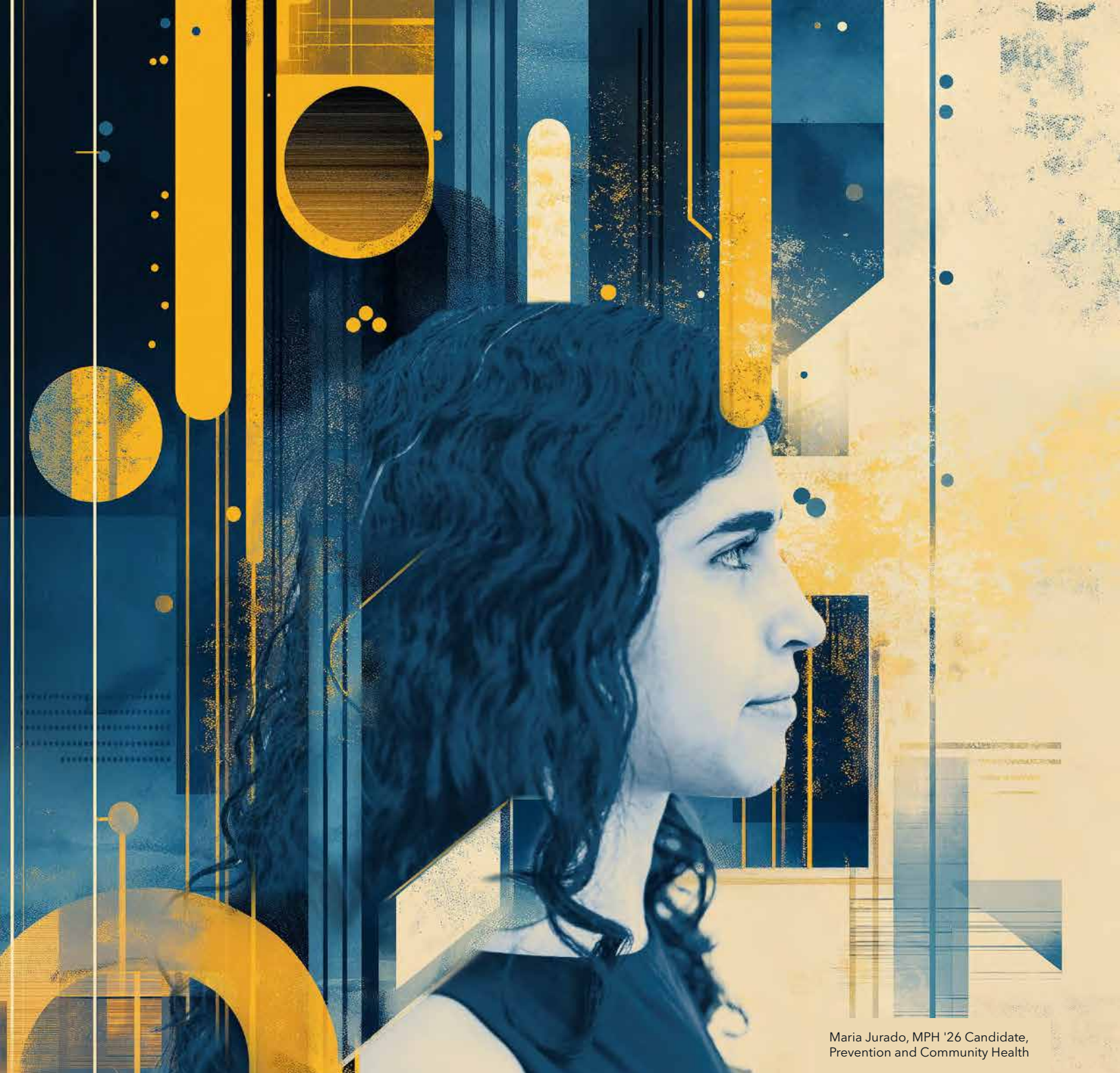
With a fellowship from the Academy of Master Teachers of the SPH, Professor Juan Klopfer developed "Mathematical Resources for Public Health Students."

The Milken Institute SPH Office of Research Excellence recognized Professor Adam Ciarleglio with a Research Innovation Award for the proposal "Developing Multiple Imputation Methods for Missing Functional Data to Allow for Novel Approaches for Analyzing Correlates of Alzheimer's Disease and Related Dementias."



TULANE UNIVERSITY
School of Science
& Engineering

2024
Tulane Science and
Engineering Outstanding
Alumni Award Winner
Dr. John Lachin



Maria Jurado, MPH '26 Candidate,
Prevention and Community Health

ENVIRONMENTAL & OCCUPATIONAL HEALTH

IMPACT: DEPARTMENT OF ENVIRONMENTAL AND OCCUPATIONAL HEALTH

The Department of Environmental and Occupational Health (EOH) is making a significant impact on public health by addressing some of the most pressing environmental challenges of our time. From advocating for workplace safety in the face of climate change to advancing environmental justice through data-driven solutions, EOH faculty are at the forefront of efforts to improve health outcomes for vulnerable populations. Their research informs policy, shapes public health initiatives, and brings real-world solutions to complex problems, such as air pollution and antibiotic resistance. Whether through groundbreaking studies, collaborations with government agencies, or contributions to global health metrics, EOH is committed to applying science and expertise to protect health, promote equity, and drive positive change in communities around the world.

CHAMPIONING WORKPLACE SAFETY AND HEALTH

The National Commission on Climate and Workforce Health empowers employers to protect worker and

business health from extreme weather conditions as it innovates solutions to mitigate climate-related health risks. This year, the Commission named David Michaels, a professor in EOH, a founding member.

In addition, Michaels' research reached a broad audience. He authored several key peer-reviewed and opinion-based articles published by The British Medical Journal, Harvard Business Review, Health Affairs, JAMA Network, The American Prospect, and the American Journal of Public Health, among others. He also gave the keynote address on workplace heat stress at the G20 OSHNet Meeting held in Fortaleza, Brazil. His expertise also led to an invitation to speak at a meeting of the National Academy of Sciences, Engineering, and Medicine Committee on Personal Protective Equipment for Workplace Safety and Health.

ADVANCING ENVIRONMENTAL JUSTICE WITH DATA APPLICATIONS

Kristi Pullen Fedinick, associate research professor in EOH, and Natasha DeJarnett, EOH professorial lecturer, are on assignment at the White House. The two co-lead the development and writing of the "Environmental Justice Science, Data, and Research Plan" – the first-ever government-wide plan to provide principles, information, and resources to advance environmental justice and improve public health. Pullen Fedinick serves in the White House Office of Science and Technology Policy as the assistant director for environmental justice science & technology. DeJarnett serves as deputy director for environmental justice data and management for the White House Council on Environmental Quality.

Susan Anenberg, professor and chair of EOH, served as a committee member for a newly released study by the National Academies entitled "Constructing Valid Geospatial Tools for Environmental Justice." This study evaluates several environmental justice tools and provides a conceptual framework and data strategy recommendations for developing the composite indicators at the core of geospatial environmental justice tools.

"Climate change. Environmental justice. Unhealthy air. These are just a few of the fundamental health challenges facing people today. This past year, our world-class professors, staff, and students, addressed these challenges through their research and facilitated the application of their findings to make healthier workplaces and environments for all."

Susan Anenberg
Professor and Chair of the Department of
Environmental and Occupational Health and
Director of Climate Health Institute

PUTTING RESEARCH INTO ACTION

For the first time, data about a harmful air pollutant is accessible in a widely-used tool, providing critical information to help address air pollution disparities in overburdened communities. In partnership with the U.S. Environmental Protection Agency, nitrogen dioxide pollution was added to the agency's environmental justice mapping tool thanks to Assistant Research professors of EOH Gaige Kerr and Dan Goldberg, along with Anenberg. This work was highlighted in the NASA news story, "NASA, EPA Tackle NO₂ Air Pollution in Overburdened Communities."

Anenberg, Kerr, and Goldberg also collaborated with the Institute for Health Metrics and Evaluation to incorporate the burden of air pollution on pediatric asthma development in the widely-used Global Burden of Disease (GBD) 2021 study. This marked the first time nitrogen dioxide pollution was included in the study, and air pollution was linked to pediatric asthma in the GBD. Results show that nitrogen dioxide pollution is the fifth leading cause of healthy years of life lost for children aged 5-14 years in the U.S. The GBD studies are commonly used to guide resource allocation to promote public health globally.

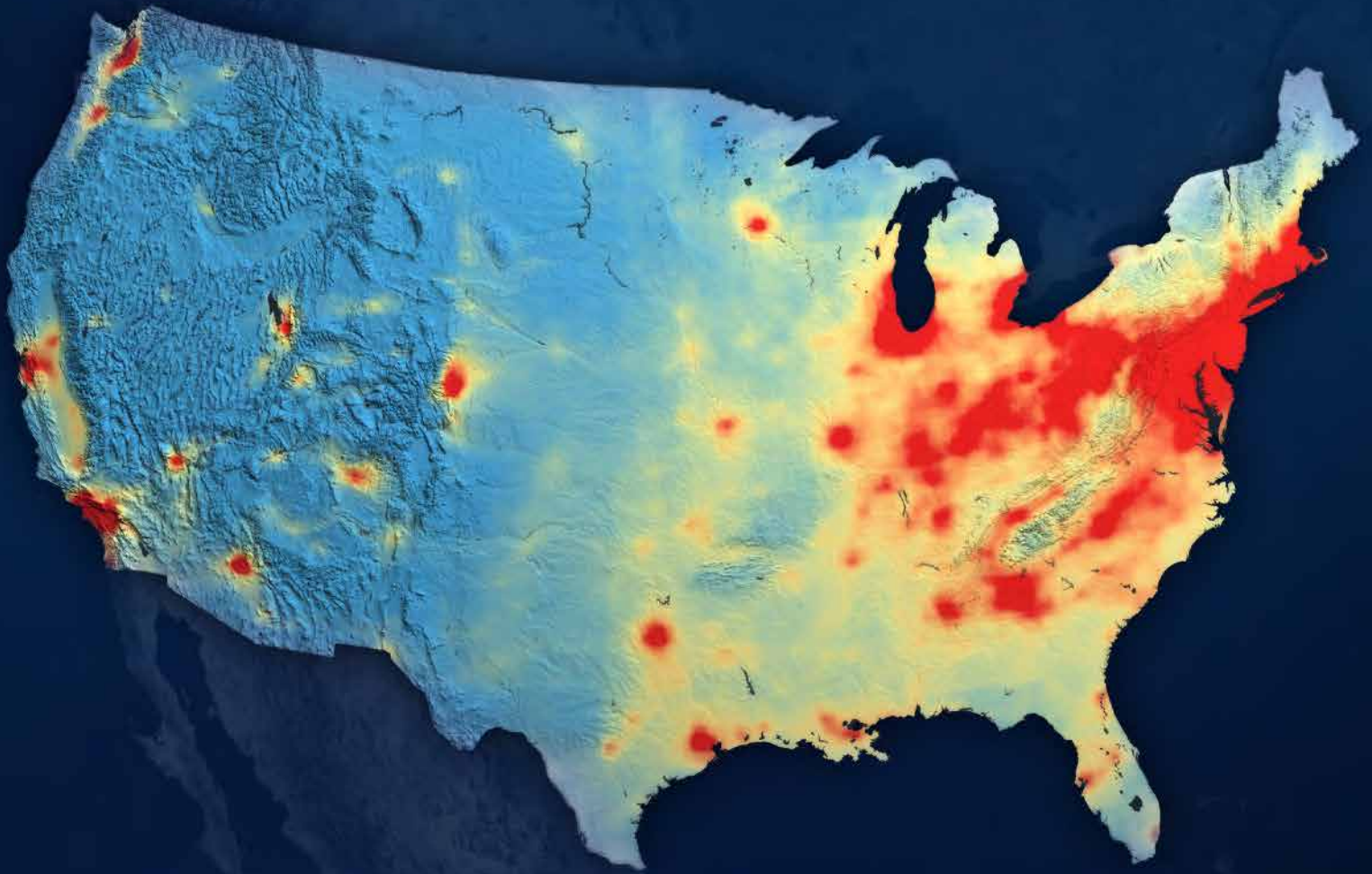
The USDA recently strengthened its meat and poultry guidelines, partly based on research led by Lance B. Price, professor of

EOH and founding director of the Antibiotic Resistance Action Center (ARAC). Price's study, conducted in 2021-2022, found that a portion of beef cattle allocated to the "raised without antibiotics" market had been given antibiotics. Published in Science in April 2022, the study used empirical evidence to make policy recommendations.

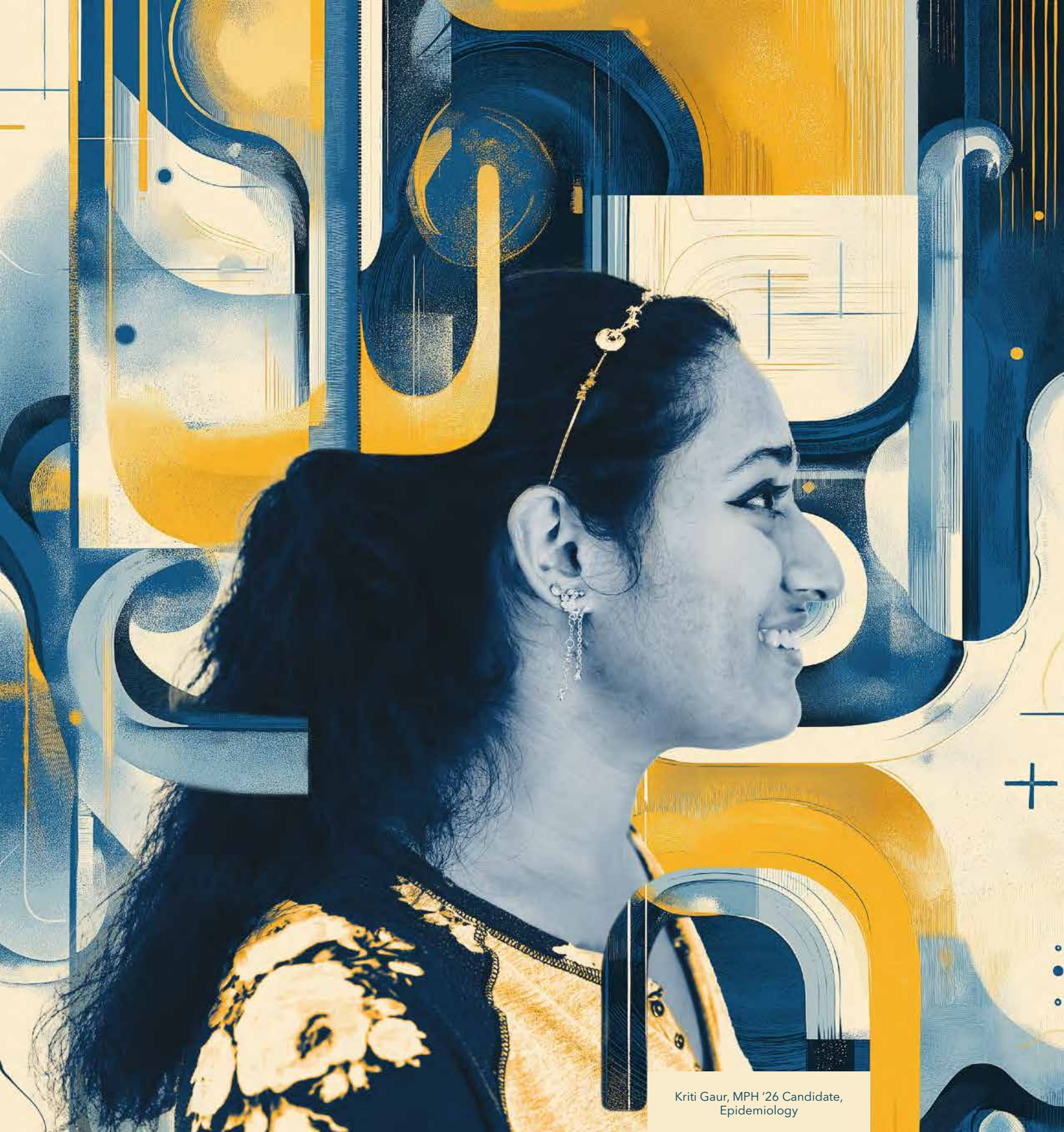
The James Beard Foundation and the Global Food Institute released a report that offers independent restaurant owners valuable analysis of the economic impact climate change will have on their businesses, focusing on food supply chain interruptions. EOH department MPH students Hannah Boback, Vana Brookins, Jordi Fischbach, Jawayria Rehman, Owen Timms, and Cindy Weinman were contributing authors on the report released by GW entitled "The Climate Reality for Independent Restaurants: A Deep Dive into the Supply Chain and New Economic Realities."



NASA, EPA TACKLE NO₂ AIR POLLUTION IN OVERBURDENED COMMUNITIES



Satellite data from NASA's Goddard Space Flight Center showing Nitrogen-dioxide pollution.



Kirti Gaur, MPH '26 Candidate,
Epidemiology

EPIDEMIOLGY

IMPACT: DEPARTMENT OF EPIDEMIOLOGY

In the last year, the Department of Epidemiology (DEPI) focused on enhancing its internal infrastructure to better support its faculty, staff, and students. Following a series of strategic planning sessions, the department identified several areas where it could develop new supports for generating and disseminating new knowledge. These have already had a profound impact by helping generate pilot data, creating a more enriching environment through seminars and colloquia, providing dedicated doctoral study space, and improving how the department communicates its enormous contributions to the community.

TRAINING TOMORROW'S RESEARCHERS AND PRACTITIONERS

Last year, the department offered 164 courses or sections of courses for a total of 9,942 credit hours, teaching not only epidemiology students, but students across the Milken Institute SPH. On average, in 2023-2024, approximately 500 students were enrolled in the fall, 470 in the spring, and 185 in the summer. The department offers an MPH in Epidemiology, an MS in Public Health Microbiology and Emerging Infectious Diseases, and a PhD in Epidemiology.

RESEARCH

The DEPI is one of the most research-intensive departments at GW, with faculty members who lead large secondary analyses of existing data in the area of aging and cognitive health, implement substantial longitudinal cohorts and clinical trials, and lead multi-institutional efforts through significant infrastructure awards.

THE DC CLINICAL TRIALS UNIT

With the leadership of Professor and Chair Manya Magnus and Associate Research Professor Irene Kuo, the DC Clinical Trials Unit (DC CTU) supports the Whitman Walker Institute Advancing Clinical Therapeutics Globally Clinical Research Site and the George Washington University HIV Prevention Trials Network. Last year, the DC CTU continued to address the HIV epidemic in the nation's capital through cutting-edge clinical and behavioral health research studies, expanding opportunities for HIV prevention, treatment, and cure science.

164
COURSES



"Epidemiologic methods are key to unraveling the biggest public health questions of our time – now, and into the future. I am constantly impressed by the ongoing evolution of epidemiology and am proud that our department continues to impart our methods and findings to the next generation of scholars."

Manya Magnus
Professor and Chair of the
Department of Epidemiology

THE DC COHORT

Washington, DC, has one of the highest rates of HIV in the United States and is a priority region for the efforts of the US Ending the HIV Initiative. An estimated 1.7% or ~11,700 people are living with HIV in DC, with thousands more receiving care and treatment services in the District. The DC Cohort, led by principal investigators Professor Amanda Castel, Associate Professor Anne Monroe, and Professor Alan Greenberg, is an NIH-funded longitudinal observational cohort of persons living with HIV and receiving outpatient care at 14 clinical sites, including community-based clinics, academic centers, and one federal hospital. The study partners with the DC Department of Health HIV/AIDS, Hepatitis, STD, TB Administration (HAHSTA) to link health department data and Cohort data and help the community understand the care and treatment trajectories of a representative sample of people with HIV receiving care at D.C.-based clinics.

So far, the D.C. cohort data have been applied to improve patient engagement in care, to assess the uptake of newer HIV treatments such as long-acting injectable medications, to understand the impact of mental health, substance use and social determinants of health on HIV care outcomes, as well as understand the impact of emerging infectious diseases such as COVID-19 and Mpox among people living with HIV.

1.7%
~11,700 PEOPLE
LIVING WITH
HIV



ALUMNI HIGHLIGHTS

PhD graduate Avinash Chandran was appointed to the American Society of Sports Medicine Collaborative Research Network Leadership Committee. He is on the National Women's Soccer League Taskforce for injury research and surveillance and the chief science officer and managing director for the NCAA Injury Surveillance Program. Chandran won the 2024 Early Career Award from the Injury Control section of APHA.



MPH graduate Kofi Essel, the food as medicine director at Elevance Health, was named Fierce Healthcare's Most Influential Minority Executives in Healthcare for 2024.



MPH graduate Jason Freeman is studying cancer disparities in a T32 program as a PhD student at the University of Chicago and has published numerous papers this year in peer-reviewed literature.





Helena Somborac, BSPH'26 Candidate

EXERCISE & NUTRITION SCIENCES

IMPACT: DEPARTMENT OF EXERCISE AND NUTRITION SCIENCES

“Poor diets, lack of physical activity, and a built environment that often fosters unhealthy foundational health behaviors – we tackled these problems last year at the local, national, and global level, adhering to our mission to promote optimal health and prevent chronic disease.”

–Jennifer Sacheck, Sanofi Professor of Prevention and Wellness & Chair, Exercise and Nutrition Sciences

The Department of Exercise and Nutrition Sciences (EXNS) is dedicated to advancing public health through research, community engagement, and innovative education. By addressing critical issues in nutrition, physical activity, and public health policy, the department’s work is helping to shape healthier communities both locally and globally. From influencing national dietary guidelines to conducting cutting-edge studies on maternal and child health, EXNS is committed to translating scientific research into real-world solutions that improve lives.

LENDING EXPERTISE TO NATIONAL DIETARY GUIDELINES

Sameera Talegawkar, a professor in the Department of Exercise and Nutrition Sciences (EXNS), is contributing her expertise in dietary patterns and minority health as a committee member making recommendations to the 2025 U.S. Dietary Guidelines for Americans, a program jointly managed by the U.S. Department of Agriculture and the U.S. Department for Health and Human Services. Allison Sylvetsky, EXNS associate professor, contributed to the Robert Wood Johnson Foundation’s Healthy Eating Research Panel on a consensus recommendation for children’s beverage consumption.

ENGAGING THE COMMUNITY WITH RESEARCH-INFORMED ACTION

Sylvetsky, Sacheck, and other SPH colleagues continued to pilot a social-marketing campaign that aims to reduce sugar-sweetened beverage consumption among toddlers and youth in Washington, DC’s Ward 7 and 8 Black communities in collaboration with pediatricians.

Sylvetsky received her first NIH-funded R01, which allowed her to run a first-of-its-kind randomized controlled trial to examine the effects of intergenerational low-calorie sweetener exposure among pregnant mothers and their children.

A study funded by the Bill & Melinda Gates Foundation is continuing to develop a robust, harmonized global dataset to evaluate pregnancy risk factors, better estimate the burden of disease for women and children, and inform research and development of new health interventions. The study is led by Emily Smith, EXNS professor.

In partnership with FoodPrints and with funding from USDA, Sacheck, PhD student Christie St. Pierre, and several Milken Institute SPH students are evaluating the impact of kitchen garden education programs in low-income DC public elementary schools on children’s food literacy and fruit and vegetable intake. Sacheck is also partnering with Virginia elementary schools in her NIH-funded trial examining the impact of a physical literacy curriculum in schools on engaging families and improving children’s physical literacy and physical activity engagement.

Jennifer Sacheck
Sanofi Professor of Prevention and Wellness & Chair,*
Exercise and Nutrition Sciences

*Sacheck left GW in February 2025. Sameera Talegawkar, a professor in EXNS is serving as Interim Chair.



MAKING A DIFFERENCE ON CAMPUS...AND BEYOND

The Metabolic Testing Laboratory continued collaborating with the lay public, researchers across campus (including GW's School of Engineering and Applied Science), and GW Athletics to provide health assessments, including body composition, resting metabolic rate, and fitness testing.

The Fitness, Rest, and Exercise for Strength and Health study marked its fourth year. Led by Sacheck and in collaboration with Kyle Levers, EXNS assistant professor, the study examines incoming GW freshmen's health behaviors and health biomarkers. It assesses them annually over their four years at GW. This project is managed entirely by undergraduate and graduate students of SPH.

Under the leadership of EXNS Assistant Professor Karina Lora, the undergraduate service-learning course George Reads received renewed funding from the Honey W. Nashman Center to continue through the spring semester at the Washington, DC, nonprofit CentroNia.



DEPARTMENT GROWTH AND ACCOLADES

Three new faculty members joined EXNS last year.



Professor Barbara Kowalczyk, a nationally recognized expert often referred to by Dean Goldman as the “Queen of Food Safety,” has joined the newly named GW Institute for Food Safety and Nutrition Security as director.



Carmen Ortega-Santos, assistant professor, has expertise in nutrition, physiology, and the microbiome.



Gabrielle Headrick, associate professor, specializes in food policy, food systems, and nutrition security and directs the undergraduate nutrition program.

The American Society of Nutrition recognized EXNS Assistant Professor Karina Lora with the mid-career Nutrition Education and Behavioral Science Research Interest Section Award.



Jasmine Kaidbey, PhD '24, became the first student to graduate with a doctorate in Exercise Physiology and Applied Nutrition from the GW Department of Exercise and Nutrition Sciences.





Jean Jacques Brou, MPH '26, Global Health

GLOBAL HEALTH

IMPACT: DEPARTMENT OF GLOBAL HEALTH

The Department of Global Health (DGH) is dedicated to addressing the world's most pressing health challenges, translating research into tangible solutions that improve lives around the globe. Through a combination of fieldwork, policy advocacy, and hands-on student experiences, DGH faculty and students are making a real-world impact in areas such as pandemic recovery, maternal and child health, and health equity. By collaborating with communities in need and engaging in research that informs global health systems, DGH is not only advancing knowledge but also shaping the future of public health worldwide.

"Our faculty members are leading transformative research that addresses the interconnected challenges of health equity, infectious disease, maternal and child nutrition, health systems improvement, and injury and chronic disease control – paving the way for effective policy and community-driven solutions. Through fieldwork and innovative studies, we are not only advancing global public health knowledge, but also equipping the next generation of leaders to make a lasting impact on the world."

James Tielsch

Chair, Department of Global Health



GLOBAL HEALTH RESEARCH IN ACTION

During 2024 National Public Health Week, the Milken Institute SPH hosted a seminar on Human Rights and International Health Law in War and Conflict. The event featured a compelling panel discussion moderated by Dean Lynn Goldman, with insightful contributions from Professor Ramin Asgary and Associate Professor Adam Richards. The panel explored the intersection of health and human rights in conflict zones, a theme central to the ongoing work of Asgary, Richards, and Professor Emeritus Ron Waldman, who continue to provide strategic guidance on life-saving humanitarian health interventions in areas of conflict. Their expertise also extends to domestic public health issues, as Asgary draws parallels between the challenges faced by conflict-affected populations and the health risks confronting the homeless in the United States. In addition to their work in conflict zones, Waldman, along with Assistant Professor Sarah Baird and Assistant Professor

Jennifer Seager, has been leading research on the broader impacts of global crises on vulnerable populations. Their studies on the effects of COVID-19 lockdowns, conducted in Bangladesh, Jordan, and Ethiopia, revealed the pandemic's profound disruption to education, food security, and gender equality, with adolescent girls facing the most severe consequences. This research underscores the need for targeted interventions that address the unique vulnerabilities of adolescents in low- and middle-income countries, particularly in times of crisis.

On a similar global scale, Assistant Professor Catherine Arsenault and Associate Professor Wolfgang Munar are advancing maternal and child health research in resource-limited settings. Awarded a prestigious PATH grant, they are working to improve healthcare delivery for vulnerable women and children, blending health equity with sustainable development goals. Their project aims to strengthen health systems in regions where maternal and child health challenges are most acute. Munar is also mentoring students on this project, fostering the next

generation of global health leaders committed to improving outcomes for the most underserved populations.

The focus on maternal and child health is further emphasized by a collaborative study led by Assistant Professor Emily Smith, Professor Chris Mores, and Chair James Tielsch, who are working alongside local colleagues in five African and Asian countries to identify key risk factors contributing to poor pregnancy outcomes and childhood development. Their longitudinal study, which follows thousands of pregnant women and newborns, is centered on developing sustainable, locally relevant solutions to improve maternal and child survival rates. Tielsch is also spearheading research in Nepal to tackle childhood mortality and nutrition challenges, contributing to global efforts to reduce preventable deaths among children.

FACULTY HIGHLIGHTS

In November 2023, Associate Professor Uriyoán Colón-Ramos was named a Public Voices Fellow as part of AcademyHealth's prestigious 2023-2024 cohort. This fellowship, offered in partnership with The OpEd Project, equips leaders like Colón-Ramos with the tools to amplify their research and ideas, driving inclusive and equitable health services research and policy approaches.

In August 2023, the Rockefeller Foundation awarded Professor Carlos Santos-Burgoa a Bellagio Residency, where he advanced his research on public health protection, focusing on comparative analysis to build critical value in regulatory approaches, particularly in low- and middle-income countries. This work builds on his impressive career, during which he has contributed to public health responses to crises like Hurricane Maria and the COVID-19 pandemic. Another one of his major ongoing projects includes developing Total Excess Mortality (TEM) surveillance systems for real-time decision-making during disasters and public health crises. His research aims to help governments better understand and respond to the true human toll of disasters, using accurate and timely data on excess mortality to inform public health interventions and resource allocation.

Associate John (Jack) Sandberg continues to publish findings from his unique field-based study of social networks in rural Senegal. His work has resulted in three PhD theses and multiple published papers highlighting the importance of social networks in understanding community perceptions of health and illness and the factors that influence behavior change.



Professor Uriyoán Colón-Ramos

FACULTY ACCOLADES

Chair James Tielsch received the 2024 Oscar and Shoshana Trachtenberg Award for Service.

Professor Sarah Baird is co-chair of the second Lancet Commission on Adolescent Health and Well-Being.

Professor and Senior Associate Dean for Research Adnan Hyder is named co-leader of the Lancet Commission on Global Gun Violence and Health.

Assistant Professor Wendy Ellis was named the inaugural director of the university-wide Institute for Racial, Ethnic, and Socioeconomic Equity.

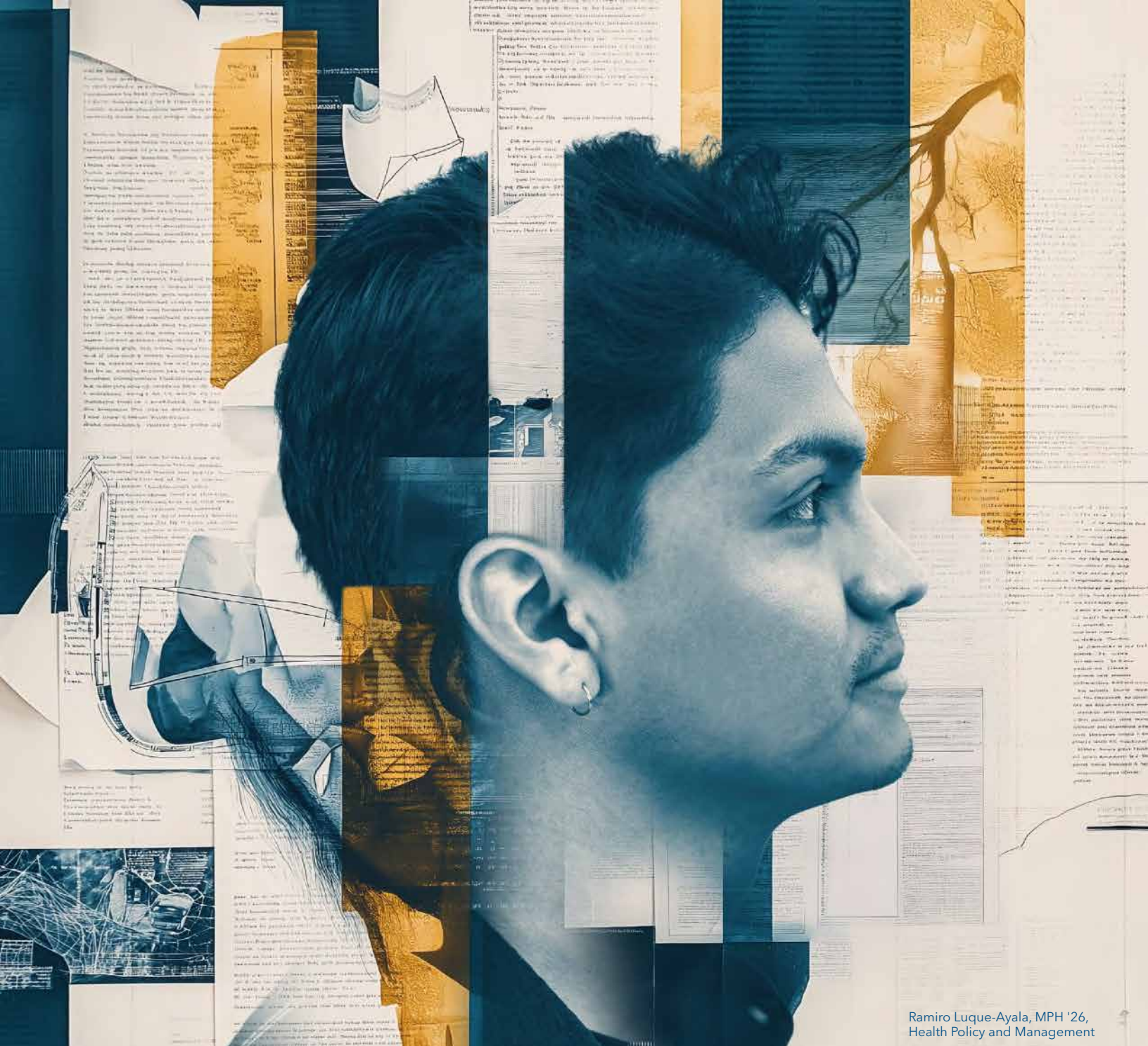


THE NEXT GENERATION OF PUBLIC HEALTH LEADERS

Last year, DGH students worked closely with faculty members in hands-on practicums in countries like Cambodia, India, Rwanda, and Ecuador, gaining first-hand experience that blends academic learning with real-world public health challenges. This immersive educational model ensures that students graduate fully prepared to lead and innovate in the global health arena, following in the footsteps of their faculty mentors.



Professor Amita N. Vyas,
Founder, Global India Fund



Ramiro Luque-Ayala, MPH '26,
Health Policy and Management

HEALTH POLICY & MANAGEMENT

IMPACT: HEALTH POLICY AND MANAGEMENT

The Department of Health Policy and Management (HPM) is driving change at the intersection of public health and policy, focusing on the most urgent challenges shaping the future of health care in the United States. From advocating for equitable access to health care to responding to the evolving legal landscape, HPM's work has made a tangible impact on policy decisions that affect millions of people. By providing evidence-based insights, engaging in legal advocacy, and addressing critical issues like maternity care, Medicaid, and the intersection of health and civil rights, HPM is not only contributing to national conversations but also ensuring that public health perspectives are integral to shaping effective, equitable policies.

RESEARCH AND RESPONSE

Access to reproductive care has become a hotly contested topic in today's world and HPM leaders are providing public health feedback to the courts. Associate Teaching Professor MaryBeth Musumeci spearheads the department's public health amici project, working closely with the renowned Professor Emerita Sara Rosenbaum.

Together, they've played a pivotal role in shaping legal arguments through amicus briefs, ensuring that public health perspectives are represented in courtrooms across the country.

As the fight against discrimination in health care intensifies, Rosenbaum, Musumeci, and the GW amicus brief team made a bold impact by co-authoring a compelling Health Affairs Forefront piece. Their article, "Four Key Takeaways From a Health Care Civil Rights Landmark: The Final Section 1557 Rule from the Biden Administration", unpacks the sweeping changes introduced by the Biden administration that strengthen the Affordable Care Act's ban on discrimination. The team's analysis spotlights the far-reaching implications of this civil rights milestone, underscoring its potential to reshape the healthcare landscape and safeguard equitable access for millions.

Anne Markus, professor and chair of HPM, has been instrumental in shaping the future of women's health and reproductive care. She lent her expertise to an advisory panel convened by the Commonwealth Fund, contributing to the development of a groundbreaking, comprehensive scorecard on women's health and reproductive care. Additionally, she provided critical feedback on a new measurement tool designed by the Health Resources and Services Administration's Maternal and Child Health Bureau, serving on the MCHB Collaborative Health Equity Measurement (CHEM) Expert Group. Markus' influence extended to the 2023 Food and Nutrition Conference and Expo, where she shared key findings from the GW Academy of Nutrition and Dietetics fellowship's Medicaid mapping study. Her presentation at this major event highlighted the intersection of Medicaid and nutrition, showcasing impactful research that informs both policy and practice.

"To counter the chipping away of fundamental rights and diminishing access to quality health services in the United States, producing impactful scholarship has never been more important. And it has never been more important to empower tomorrow's analysts and leaders with the best evidence to address these issues. Our staff, researchers, and faculty have done both superbly this past year."

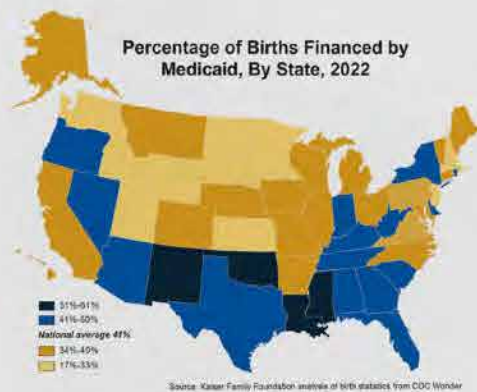
Anne Markus
Professor and Chair of Health
Policy and Management

Markus was also the leader of a Commonwealth Fund-sponsored project, co-authoring with HPM researcher and doctoral candidate Caitlin Murphy, among others, the first report of its kind documenting the status of state Medicaid managed care expectations for the delivery of services on the continuum of maternity care to pregnant and postpartum people enrolled in the program. With Murphy, Markus also co-led and co-authored the comprehensive analysis of the study findings published in the peer-reviewed journal, *The Milbank Quarterly*.

The first-ever HPM Policy Research Fellowship was launched in partnership with the Academy of Nutrition and Dietetics, offering five GW graduate students the opportunity to serve as HPM Research Fellows. The fellowship focused on a study that mapped Medicaid coverage and payment for medical nutrition therapy provided by dietitians, exploring both fee-for-service and managed care models for children and adults. This initiative provided invaluable insights into how nutrition therapy is supported within Medicaid, while fostering hands-on research experience for the participating students.



Figure 1. Births Financed by Medicaid in 2022



Percentages in this map depend on state-determined eligibility levels, as well as citizenship status, age, and income distribution of population giving birth in the state. CDC, Centers for Disease Control and Prevention.

Despite its coverage of a large proportion of births, it is worth noting that one in ten mothers still go uninsured because of low Medicaid income eligibility limits in certain states.^{15,16}

Medicaid has become a dominant force in providing maternal health services, which exist along a "continuum" that spans family planning, preconception care, prenatal care, birth/delivery care, and postpartum care, and is inclusive of behavioral health services, case management, wrap-around social supports, and team-based care. This is especially true because of the program's unique coverage design: Medicaid provides a comprehensive array of services, including preventive, primary, acute, and long-term services and supports as well as protections against more than nominal cost sharing, including complete protection for cost sharing for pregnancy-related care. Furthermore, to guard against coverage lapses during and after pregnancy, Congress in 2022 amended the Medicaid statute to authorize states to assure continuous coverage both throughout pregnancy and a 12-month postpartum period, thereby intensifying the value of care. As of 2024, 45 states and Washington, DC, have adopted

C. Murphy et al.

FACULTY & ALUMNI HIGHLIGHTS

Patricia MacTaggart, teaching instructor and program director of HPM's HealthInformatics@GW, was named a 2024 HIMSS Changemaker in Health Award in the Policy Influencer category, the only non-governmental recipient of the award.



Vermont Governor Phil Scott appointed DrPH in Health Policy alum DaShawn Groves as the new Commissioner of the Department of Vermont Health Access.



Emma Sandoe, PhD, MPH alum, has been appointed as the permanent director of Oregon's Medicaid program. Since 2019, Sandoe has served in North Carolina Medicaid, most recently as the deputy director of Medicaid Policy.



Two alumni of the MHA program have been honored in Becker's Healthcare list of Emerging Leaders: 42 Provider Organization Leaders Under 40, 2023: Taylor Rhoades, a 2023 graduate of the MHA program, and Inderjeet Sandhu-Gay, who completed the residential MHA program in 2010.





Lilli Silverston, MPH'25,
Prevention and Community Health, BSPH' 24

PREVENTION & COMMUNITY HEALTH

IMPACT: DEPARTMENT OF PREVENTION AND COMMUNITY HEALTH

The Department of Prevention and Community Health (PCH) is committed to addressing the most pressing public health challenges faced by underserved communities, making a profound impact through innovative research, community engagement, and teaching excellence. Last year, faculty members secured substantial funding to explore critical health issues ranging from mental health and HIV to the effects of historical trauma and the promotion of maternal and child health. Their work, supported by prestigious organizations like the NIH and the Bill & Melinda Gates Foundation, is driving real change by developing interventions that improve health outcomes for vulnerable populations. Beyond research, PCH faculty and students are dedicated to translating knowledge into action, contributing thousands of hours to support community partners and enhance public health initiatives both locally and globally.

RESEARCH FOCUSED ON COMMUNITY NEEDS

The disparities in health outcomes across different populations, particularly among those historically marginalized, are a significant challenge in public health. These disparities are shaped by a complex interplay of historical, social, and environmental factors, making it essential to develop targeted interventions that address the unique needs of diverse communities. A growing body of research is dedicated to understanding these influences and fostering equity in health outcomes.

One critical area of focus is the long-term impact of historical trauma, particularly on Indigenous populations. Professor Mark Edberg's NIH-funded R01 award for "Development of an Instrument for Assessment of Indigenous Historical Trauma as a Social Determinant of Health Among American Indian/Alaska Native Populations" aims to measure the lasting effects of trauma on the health and resilience of these communities. In addition, his Phase II implementation funding for "Changing the Narrative on Firearms Violence: A Community Collaborative Intervention" seeks to shift the conversation on gun violence, a pressing issue that disproportionately affects marginalized groups, through community-driven solutions.

A similar focus on social and environmental determinants of health is also crucial for improving outcomes for other vulnerable populations. Associate Professor Derek Dangerfield's NIH-funded UG3 award for "Identifying Socioecological Profiles that Impact Changes in Care Outcomes among Black Sexual Minority Men Living with HIV" will explore the specific challenges faced by Black sexual minority men, whose health outcomes are deeply influenced by the intersection of social and structural factors such as stigma, discrimination, and healthcare access. This research aims to inform more effective care strategies and interventions tailored to this underserved population.

"Harnessing the power of community, research, and education, the Department of Prevention and Community Health continued to make a demonstrable impact on a wide range of health outcomes last year."

Melissa Napolitano
Professor and Interim Chair,
Department of Prevention and Community Health



The influence of societal stressors and adaptive factors on mental health is another area of growing importance, particularly for Latinx communities who often face unique challenges due to cultural and socioeconomic factors. Professor Kathleen Roche's NIH-funded R01 grant for "Societal Stressors, Adaptive Factors, and Developmental Timing: Influences on Latinx Mental Health from Early Childhood through Young Adulthood" will examine how stressors at different developmental stages impact mental health outcomes, providing valuable insights for interventions aimed at promoting resilience and well-being across the life course.

In addition to these efforts, community-based interventions are proving essential for addressing health disparities at a broader level. Associate Professor Elizabeth Andrade received funding from NIH's Community Engagement Alliance to test a digital community intervention designed to reduce chronic disease risks among Latinos, a population that faces significant barriers to healthcare access and prevention programs. This initiative highlights the

potential of digital health tools to reach underserved populations and promote healthier lifestyles at scale.

Furthering the global focus on health equity, Associate Professor Donaldson Conserve's R01 for "Implementation of an HIV Status-Neutral Nurse-Led Intervention to Increase Equity in Clinical Outcomes for Male HIV Self-Testers in Tanzania" aims to improve HIV care outcomes for men in Tanzania, using a novel nurse-led model to enhance access and quality of care. This research underscores the importance of culturally tailored interventions in improving health outcomes in resource-limited settings.

Finally, addressing maternal and child health in low-resource settings, Professor Doug Evans received a grant from the Bill & Melinda Gates Foundation to study a digital health program aimed at improving maternal and child health in Nigeria. By leveraging digital tools to promote education and access to care, this project demonstrates the potential for technology to address critical health issues in underserved regions.

TEACHING EXCELLENCE



The Milken Institute SPH recognized Associate Professor Karen McDonnell with an Excellence in Doctoral Teaching Award



Associate Professor Tamara Henry won the President's Council on Service and Civic Participation's Presidential Volunteer Service Award



The Nashman Center named Associate Professor Tamara Taggart Faculty Fellow for 2023-2024

IMPACT IN THE COMMUNITY

PCH students contributed over

12,000 HOURS

of hands-on support to community partners in the 2023-2024 academic year, assisting them with program design and evaluation, the translation of research findings to applied practice, and grant proposals.

Associate Professor Olga Acosta Price participated with Elizabeth Vaquera, director of the Cisneros Hispanic Leadership Institute, on the panel "Empowering Resilience: Strategies for Mental Wellness in Hispanic/Latino Youth" at the Congressional Hispanic Caucus Institute 2024 Summit.

Associate Professor Khadi Ndiaye spoke at Boston University's School of Public Health on "Uncertainty, Trust, and the Future of Public Health Communication."

Professor Amita Vyas gave the keynote address, "Maternal Nutrition and Economic Empowerment" at Sukarya USA, Healthy Mothers Building A Stronger Society, which also featured talks presented by Associate Professor Monica Ruiz on "Adolescent Health & Empowerment," and Assistant Professor Nitasha Nagaraj on "Gender Equity and Women's Health."

The NIH invited Professor Deanna Kerrigan to present on "Mindfulness, Mental Health, and HIV Outcomes Among Female Sex Workers Living with HIV in the Dominican Republic."

Professor Melissa Napolitano and colleagues were appointed by the American College of Sports Medicine to develop the consensus statement "Physical Activity and Excess Body Weight and Adiposity for Adults."

Professor Monica Ruiz participated in the panel discussion "Addressing Criminal Justice as a Barrier to Ending HIV" at the Intra-Jurisdictional EHE/FTC Alignment Workshop, hosted at the DC Department of Health.



Monica S. Ruiz, PhD, MPH
Associate Professor
Prevention and Community Health



Jean Jacques Brou, MPH '26, Global Health (left)
Brendan Fries, PhD Candidate, Global Health (center)
Pratima Thami, MPH'25 Candidate (right)

CENTERS, INSTITUTES & INITIATIVES

THE ANTIBIOTIC RESISTANCE ACTION CENTER

The Antibiotic Resistance Action Center team discovered that foodborne zoonotic *E. coli* from food animals accounted for 8% of urinary tract infections (UTIs) in Flagstaff, Arizona. The team's development of an innovative statistical-genomic model made this finding possible, and it is now being applied in studies across other regions of the world. Before this study, foodborne *E. coli* infections were primarily thought to cause diarrheal disease. UTIs are among the most common infections and can lead to life-threatening blood infections if not treated promptly and effectively.

BIostatISTICS AND EPIDEMIOLOGY CONSULTING SERVICE

In a major collaboration between Biostatistics and Epidemiology Consulting Service (BESCE) and the School of Nursing, BECS member Adam Ciarleglio and senior research assistant Annette Aldous are working on the PCORI-funded ExPAND Study (~\$12M), a stepped-wedge randomized trial comparing approaches to help patients with kidney disease make decisions about their treatment options.

CENTER FOR COMMERCIAL DETERMINANTS OF HEALTH

The Center on Commercial Determinants of Health (CCDH) has made significant strides over the past year through impactful global initiatives and collaborations. Recent funding has enhanced its research efforts, particularly in gun violence and health. In partnership with GW Law School, CCDH received the GW Cross-Disciplinary Research Fund (CDRF) grant for a project titled "Exploring Legal and Commercial Determinants of Firearm Violence," led by Professors Arturo Carrillo and CCDH director Adnan A. Hyder. Additionally, CCDH secured funding for a webinar series, "Understanding Global Gun Violence and Health," through the GW University Seminars Funding Program.

In April 2024, CCDH expanded its ethics training portfolio with an NIH R25 bioethics training grant for the "US-Zimbabwe Research Ethics Training Program," in collaboration with the University of Zimbabwe, led by Drs. Hyder and Ndebele and Dr. Chidzonga.

The Center also hosts an annual Global Health Summer Training Program at the Milken Institute School of Public Health. In July 2024, it welcomed 15 trainees from Mali, Pakistan, Zambia, Guinea, and Zimbabwe for an extensive capacity development program featuring interactive sessions and workshops.

CCDH supports two PhD students, one of whom recently completed his engagement with the Center. The second student contributes to CCDH's research on commercial determinants of health. Additionally, CCDH regularly hires graduate research assistants, providing valuable academic and professional development opportunities.

CENTER FOR COMMUNITY RESILIENCE

Director Wendy Ellis and her colleagues at the Center for Community Resilience (CCR) have continued to expand their support for local communities working to address systemic inequity and strengthen resilience nationwide. Over the past year, the Center harnessed the power of community narratives to drive change, weaving stories that fostered meaningful systems transformation. A key highlight was the Truth & Equity initiative, which began in Cincinnati in 2020 and led to a historic apology from the city's mayor for policies that had devastated a once-thriving Black community.

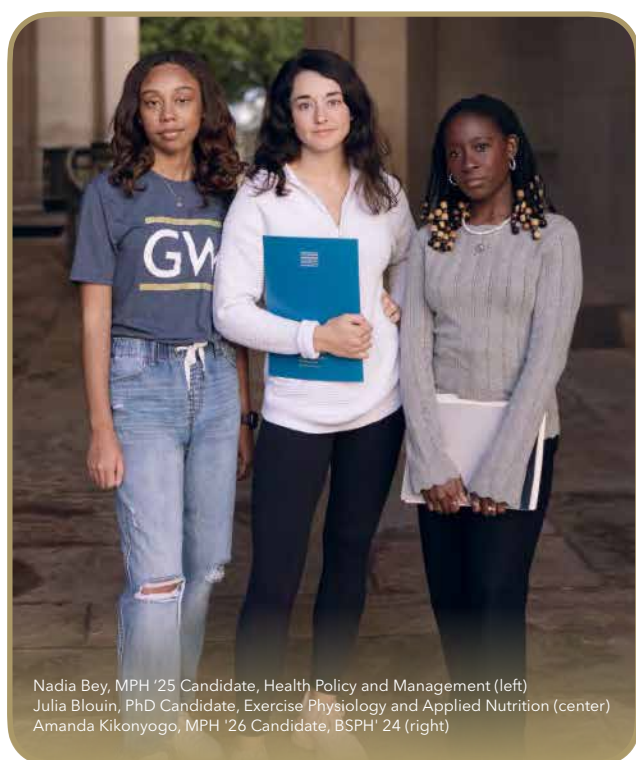
With CCR as a partner, community coalitions nationwide are developing Equity Dashboards to guide strategic investments to repair racial harm, restore economic vitality to disinvested neighborhoods, and ultimately strengthen community resilience. Funded by the Centers for Disease Control and Prevention (CDC) Injury Prevention Center, local public health leaders use these Dashboards to address the upstream, systemic drivers of health and social inequities as part of CCR's Resilience Catalysts in Public Health initiative. This year, CCR published an evaluation of this groundbreaking work, showcasing how Dr. Ellis's Community Resilience framework is translating the theory of Public Health 3.0 into real-world practice. In addition to its partnership with NACCHO to implement



the framework in local health departments, CCR has secured additional funding from the CDC to expand its work to state health departments in collaboration with the Association of State and Territorial Health Officials.

The impact of CCR's frameworks is also being felt internationally. In the Netherlands, public health leaders consult with CCR to implement the Building Community Resilience model in three cities. Meanwhile, Dr. Ellis expanded her global teaching efforts by leading a week-long Building Resilient Community Health Systems course at the University of Global Health Equity in Kigali, Rwanda. Public health leaders from Rwanda, Lesotho, and Malawi participated in the course, learning how to apply the Community Resilience framework to build community-driven, place-based solutions to emerging public health threats such as climate change and youth mental health.

Closer to home, CCR's Fostering Equity Team completed the first phase of Shared Prosperity Catalysts – a multi-year initiative aimed at reducing poverty and inequality in the United States through the application of behavioral science. Funded by Wells Fargo and led by ideas42, phase one focused on reimagining narratives about poverty. In collaboration with Parent Watch, Inc., DC Greens, and Far Southeast Family Strengthening Collaborative, CCR conducted community-engaged research with residents of Washington, DC, to develop a narrative about living in poverty that reflects their lived experiences. The initiative has received additional funding to continue its work, now focused on addressing the narrative around gun violence in Wards 7 and 8 in the District of Columbia.



Nadia Bey, MPH '25 Candidate, Health Policy and Management (left)
Julia Blouin, PhD Candidate, Exercise Physiology and Applied Nutrition (center)
Amanda Kikonyogo, MPH '26 Candidate, BSPH '24 (right)

CENTER FOR HEALTH AND HEALTH CARE IN SCHOOLS

The Center for Health and Health Care in Schools (CHHCS) is a national research and resource center promoting effective school health programs through strong partnerships among schools, families, and communities. In the past year, it led several projects, including the DC Community of Practice for School Behavioral Health (CoP), which aims to expand comprehensive practices in behavioral health.

Highlights about CHHCS's reach and impact include:

- Hosting 87 learning events engaging over 800 stakeholders.
- Providing 1,500 technical assistance touchpoints to CoP members.
- Co-developing over 90 resources to support school activities and student well-being.
- Launching a new website with more than 6,800 views.

The J. Willard and Alice S. Marriott Foundation awarded a two-year grant to strengthen the District's school behavioral health system. At the same time, Porticus funded an evaluation of the Whole DC initiative. CHHCS is also implementing a SAMHSA-funded Mental Health Awareness Training Grant to improve adults' ability to address youth mental health concerns. Director Olga Acosta Price has presented at various national forums and serves on key advisory panels for school health.

CLIMATE HEALTH INSTITUTE

Professor Susan Anenberg, Director of the Climate Health Institute, participated in Moms Clean Air Force's inaugural Climate Disruption, Air Pollution, and Young People's Health Summit. The event provided a platform for crucial conversations among leaders in climate advocacy and children's health, including Chelsea Clinton and U.S. EPA Administrator Michael Regan. Anenberg was part of a panel discussion that focused on opportunities to build a better future, where she highlighted GW's efforts to train the next generation of climate and health leaders.

COMPUTATIONAL BIOLOGY INSTITUTE

The Computational Biology Institute (CBI) is engaged in research supported by various funding agencies, including the National Institutes of Health, the National Science Foundation, the U.S. Food and Drug Administration, the U.S. Department of Agriculture, and private funders such as the Gates Foundation. The team publishes artificial intelligence approaches for analyzing multiomics data and applies these and other approaches to diverse areas of public health. The team has published more than 20 papers in 2024, in outlets such as

Proceedings of the National Academy of Sciences. The CBI's outreach efforts include hosting high school students for summer experiences, providing workshops at international meetings, and hosting international visitors, including a current Fulbright Scholar from Morocco and the deputy division director from NSF on sabbatical leave.

DC CENTER FOR AIDS RESEARCH

Alan Greenberg, Manya Magnus, and Amanda Castel are continuing to advance the multi-institutional, NIH-funded research effort to contribute to ending the HIV epidemic and improving the health and quality of life of persons with HIV in Washington, DC, and beyond. DC CFAR, in partnership with the community and government, provides scientific leadership and institutional infrastructure to more than 250 investigator members, promotes and supports HIV science across collaborating institutions, and stimulates and supports innovative, interdisciplinary, and impactful basic, clinical, and social and behavioral science research in the NIH high-priority HIV scientific focus areas.



Mir Mohamed, MPH'24, Bioinformatics and Biostatistic (left)
Pratima Thami, MPH'25 Candidate (right)

FITZHUGH MULLAN INSTITUTE FOR HEALTH WORKFORCE EQUITY

Candice Chen, Qian "Eric" Luo, Mandar Bodas, Anushree Vichare, Clese Erikson, and Mullan Institute Director Patricia Pittman authored the article "Tracking the Elusive Medicaid Workforce to Improve Access," published by Health Affairs Forefront. The article argues that new rules for Medicaid require federal enforcement and additional tracking for state and managed care plan compliance.

The Mullan Institute released a new U.S. Medicaid Primary Care Workforce Tracker, available at www.gwhwi.org/medicaid-primary-care-workforce-tracker.html.

Anushree Vichare, PhD in Health Policy student Yoon Hong Park, and Christine M. Plepys, along with others, authored Diversity of the U.S. Public Health Workforce Pipeline (2016-2020): Role of Academic Institutions, published by The American Journal of Public Health. The article suggests systemic barriers to higher education for minority students, such as financial burdens and lack of early exposure to public health sciences.

Atlantic Fellows for Health Equity, led by Guen Burke, announced its 2024 cohort – 16 emerging leaders from around the globe passionate about health equity. Coming from Cameroon, Ethiopia, Ghana, India, Pakistan, Philippines, Switzerland, Uganda, United Kingdom, United States, and Zambia – and working in data, economics, epidemiology, government, healthcare Policy, law, medicine and nursing – these fellows represent the diverse industries and professions that impact health and well-being.

FUNDERS FORUM ON ACCOUNTABLE HEALTH

Anne Morris Reid, HPM lecturer, joined the Funders Forum on Accountable Health as the project's policy director. For a decade, Reid served in senior-level policy and leadership positions in the legislative and executive branches of the federal government – including deputy chief of staff and counselor to the secretary at the U.S. Department of Health and Human Services, chief of staff in the U.S. Senate, and professional staff to the Energy and Commerce Committee. On behalf of the Funders Forum, Reid hosted the webinar States Making the Case for Innovations in Health and Social Services, which featured

leaders in North Carolina and Texas who spoke to their experiences making the case for health-related social needs/non-medical drivers of health with state officials, and supporting community-based organization infrastructure and capacity for service delivery. Representatives from four other states also presented their efforts to support CBO infrastructure and capacity.

GEIGER GIBSON PROGRAM IN COMMUNITY HEALTH

The Geiger Gibson Program advances health equity through health policy, focusing on community health centers and their challenges. In a blog on the Commonwealth Fund's To the Point, the program examined the challenges experienced by community health centers following the Supreme Court's 2023 decision in *Dobbs v. Jackson Women's Health Organization*. Based on interviews with health center and primary care association colleagues in 15 states, the program noted many providers reeling from the compounding effects of *Dobbs*, Medicaid unwinding, and resource, capacity, and workforce constraints driven by local and national changes in the delivery of health care services. The blog underscores the importance of community health centers in providing essential healthcare services, and the need for predictable funding and enhanced federal support to meet the increasing demand for a broader scope of high-quality maternal and reproductive health services in medically underserved areas.

GILL-LEBOVIC CENTER FOR COMMUNITY HEALTH IN THE CARIBBEAN AND LATIN AMERICA

Since its launch in 2023, the Gill-Lebovic Center has been dedicated to advancing primary healthcare systems in the Caribbean and Latin America through various research initiatives. One significant project is the evaluation of the Salud Mesoamerica Initiative in El Salvador and Honduras, led by Director Dr. Wolfgang Munar. This program aims to explore the effects of a decade of performance measurement and management reforms in those countries and explain how results are produced and the reasons behind them. The research team for this initiative includes Molly Lauria, a PhD candidate in the Department of Global Health, alongside external researchers Esther Aranda (U.S.), Marvin Rodriguez (Costa Rica), and Cinzia Innocenti (El Salvador).

Additionally, the Center is developing an evidence gap map of social accountability interventions conducted by Elise Lankiewicz and Tariro Pedzi, graduate students in public health disciplines. Another research effort involves an analysis of the state of the art in primary healthcare governance, undertaken by Natalia Houghton and

Michael Harriman, who are also pursuing advanced degrees in public health. Furthermore, Camila Roberts, MPH, completed a study examining the region's regulatory landscape for public health research. Together, these projects reflect the Center's commitment to enhancing healthcare systems through targeted research.

Looking ahead, the Center will launch a Systems Lab and Seminar Series to drive transformative change in health policy and systems research across the region.

GLOBAL WOMEN'S INSTITUTE

Dr. Mary Ellsberg and her colleagues at the university chartered the Global Women's Institute (GWI) continue their groundbreaking research on violence against women and girls. GWI leads the Research Consortium of the "What Works to Prevent Violence - Impact at Scale" Programme, a seven-year initiative funded by the U.K.'s Foreign, Commonwealth and Development Office (FCDO) to scale up effective and innovative programs to prevent violence against women and girls. The core research partnership includes Johns Hopkins University, Kenyatta University, Aga Khan University, The Equality Institute and the University of Cape Town. In addition, more than a dozen research institutions, with 70% based in the Global South, are collaborating on 23 studies in 13 countries.

Dr. Maureen Murphy, who recently obtained her DrPH in Global Health at GW, together with Alina Potts, manage a robust portfolio of research on violence in conflict and humanitarian settings, including Empowered Aid, Building GBV Evidence, and Putting Survivors at the Center. GWI also leads an international online course and certification program for gender and development professionals called GenderPro.



Dr. Mary Ellsberg
Founding Director of the Global Women's Institute

THE GW INSTITUTE FOR BRAIN HEALTH & DEMENTIA

With the help of Associate Professor Melinda Power and Assistant Research Professor Emma Stapp, the Institute held several community-facing initiatives to support the prevention of Alzheimer's disease and related dementia. In spring 2024, the Institute hosted an inaugural Brain Health Month in partnership with the Alzheimer's Association. With early consultation and planning input from the DC Department of Health and in collaboration with the Prince George's County Department of Health, the Institute won a grant to complete an Aging Needs Assessment for the county.

Institute faculty members also provided a new elective for graduate students focused on current topics in brain health and an NIH-funded R25 program in collaboration with Boston University, EPGRAD, to promote interest in careers in biomedical research in brain health among undergraduate students from underrepresented groups.

INSTITUTE FOR FOOD SAFETY AND NUTRITION SECURITY

Consistent and equitable access to adequate, safe, and nutritious food is increasingly critical to sustain the world's growing population and public health. In 2024, GW re-launched the Food Policy Institute as the Institute for Food Safety and Nutrition Security (IFSAN) to recognize the linkages between these two areas. IFSAN aims to protect public health and prevent illness by advancing food systems that deliver safe, accessible, and nutritious food to all, focusing on One Health. Over 70 people attended IFSAN's inaugural event on June 6, 2024, in honor of World Food Safety Day, which featured keynote speakers from USDA and FDA.

THE JACOBS INSTITUTE OF WOMEN'S HEALTH

A 2024 issue of the Jacobs Institute's journal Women's Health Issues identified and studied aspects of healthcare and public health that affect women's health. The journal also introduced valuable resources for authors in the Equity Guide for Authors. This guide is a crucial tool intended to assist authors in addressing marginalized characteristics – such as sex, gender, race, ethnicity, and disability – while actively resisting the reinforcement of oppressive systems and marginalization.

Assistant Research Professor and Jacobs Institute Director Julia Strasser co-authored "Global Workforce Implications of Dobbs v Jackson Women's Health Organization," published in The Lancet. She was also quoted in an ABC News story, "Maternal Care Deserts Overlap with Lack of Abortion Access, Analysis Shows." Strasser also published,

with co-authors Ellen Schenk, Qian "Eric" Luo, Mandar Bodas, and Candice Chen, "Contraception Usage and Workforce Trends Through 2022," in JAMA Network Open.

SUMNER M. REDSTONE GLOBAL CENTER FOR PREVENTION AND WELLNESS

In June 2024, the Milken Institute SPH announced that Timothy Holtz, a global health epidemiologist and board-certified preventive and internal medicine physician, would serve as chair and director of the Sumner M. Redstone Global Center for Prevention and Wellness. He also holds the title of Professor of Global Health.

Previously, Holtz served as Deputy Director of the Office of AIDS Research at the NIH and was appointed Rear Admiral and Assistant Surgeon General in 2020, serving four years.

Holtz's extensive background includes managing the CDC's HIV/AIDS Research Program in Thailand and overseeing the Division of Global HIV/TB in India. He has also responded to major health crises, including the Ebola outbreak in West Africa and the 9/11 attacks, where he was a first responder.

STRATEGIES TO OVERCOME AND PREVENT OBESITY ALLIANCE

Transitioning from the Redstone Global Center for Prevention and Wellness, Strategies to Overcome and Prevent (STOP) Obesity Alliance joined the Department of Exercise and Nutrition (EXNS) last year. STOP comprises a diverse group of businesses, consumers, government, advocacy, and health organizations dedicated to reversing the obesity epidemic in the United States. Drawing on the strengths of the collaborative, STOP conducts research, makes policy recommendations, and develops hands-on tools for providers, advocacy groups, policymakers, and consumers. William H. Dietz, director of Research and Policy for the Global Food Institute and former Redstone Global Center for Prevention and Wellness chair, directs the STOP Alliance. Christine Gallagher is associate director for research and policy. Both have joined the faculty and staff of EXNS.





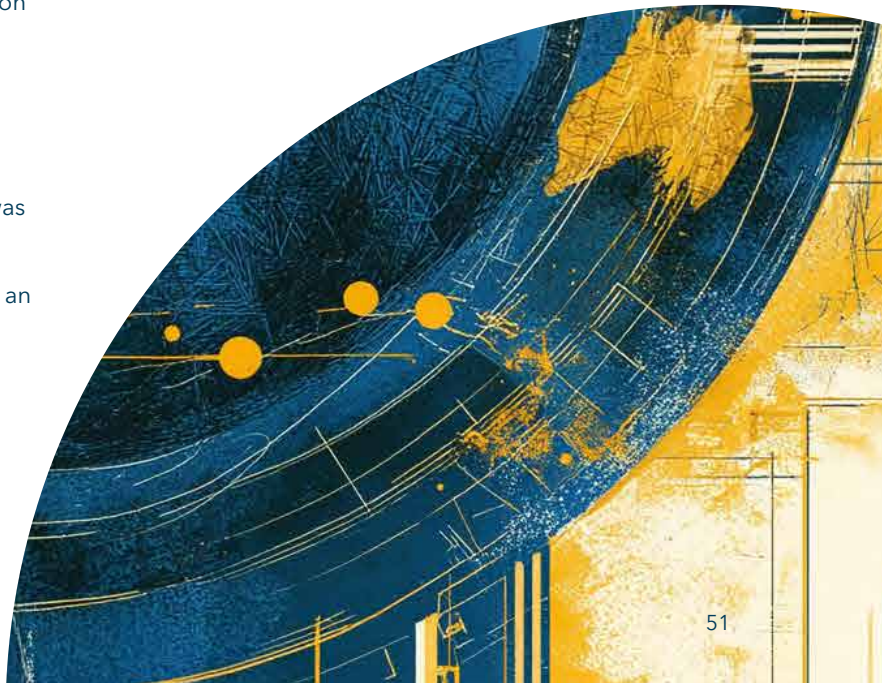
Simone Nixon, MPH'25 Candidate, Prevention and Community Health (left)
Grace Chen, Graduate Research Assistant (center)
Amanda Kikonyogo, MPH '26 Candidate, BSPH' 24 (right)

STUDENT ACHIEVEMENTS

CELEBRATING STUDENT EXCELLENCE

OUTSTANDING WORK AND ACHIEVEMENTS OF OUR STUDENTS

- Cristian Mendoza Gomez, DC CFAR center associate and first-year MPH student, was selected as a member of the ¡Adelante! Summit hosted by the White House. Mendoza Gomez discussed HIV/AIDS in Hispanic and Latino communities and presented a call to action to advance the Biden-Harris administration's National HIV/AIDS Strategy and the White House's Office of National AIDS Policy "Rising Leaders Summit: Shaping the Future of HIV Today."
- Jasmine Kaidbey, PhD '24, became the first student to graduate with a doctorate in Exercise Physiology and Applied Nutrition from the GW Department of Exercise and Nutrition Sciences.
- PhD candidate Christie St. Pierre received a prestigious USDA Pre-doctoral fellowship to examine food literacy in urban elementary schools.
- Doctoral Health Policy student Hong Lun Tiunn was appointed as the student representative to the Board of Directors for AcademyHealth, the professional association for health policy and health services research.
- Elif Alyanak, a DrPH candidate in Health Policy, published with Professor Emerita Sara Rosenbaum a commentary in The Milbank Quarterly on ACIP and immunization policy, which is also the subject of her dissertation.
- MPH Health Policy student Sam Avila was named a Winston Fellow. He is currently working at the Association for Community Affiliated Plans.
- Soo-Yeon Kim, EOH PhD candidate, was selected for a Future Investigators in NASA Earth Space Science and Technology (FINESST) award. His project focuses on applying satellite observations to estimate NO₂ concentrations, mortality burdens, and inequities. His was one of 57 proposals awarded out of 434 submitted.
- PCH postdoctoral researcher Cassidy LoParco received an F32 award to study policy and industry related factors associated with cannabis use among young adults.
- PCH PhD candidate Yuxian Cui received a dissertation grant to study the influences of marketing and related regulations on cannabis perceptions and use among young adults.
- PCH PhD candidates Joseph Green and Emily Zhang presented posters at the Annual Meeting for the Society for Research on Adolescence.
- PCH Doctoral student and TASHI T32 trainee Breana Castonguay was awarded a student scholarship to attend the Academic Consortium on Criminal Justice Health Conference and was also selected to be one of the Conference presenters.
- Doctoral student and TASHI T32 trainee Simone Sawyer was lead author for a presentation at the US Conference on HIV/AIDS 2023 with PCH faculty and staff and DC CFAR colleagues.
- Lizhao Ge earned a 2024 FDA-Oncology Center of Excellence-American Statistical Association Fellowship and the 2024 Biopharmaceutical Section Scholarship.
- Richard Shu received a student paper award from the International Chinese Statistical Association.
- Shanshan Zhang received the best presentation award at the FDA/AdvaMed Medical Device Statistical Issues Conference. Liu was also a member of the research team that received the 2023 COVID-19 response award, an NHLBI Director's award given to a research team in recognition of extraordinary efforts to counter the COVID-19 crisis.



MILKEN INSTITUTE PUBLIC HEALTH SCHOLARS PROGRAM



In 2023, we graduated our first cohort of Scholars in the Milken Institute Public Health Scholarship Program. This scholarship program designed to strengthen the public health workforce is made possible through funding from the Health Resources and Services Administration (HRSA) to the Milken Institute SPH in partnership with the National Association of County and City Health Officials (NACCHO). Our graduating Public Health Scholars are committed to improving our nation's health through their work in local and state health departments.

Claire Summa



Cara Dufresne



Alisi Banerjee



Rikiyah Mixson



Angel Oteghile



Laura Perez



Griffin Barriss



Dayna de Montagnac



Kathryn (Katie) Ghougasian



Carolyn Brown-Kaiser

COMMENCEMENT 2024

UNDERGRADUATE AND GRADUATE AWARDS

UNDERGRADUATE EDUCATION

**Milken Institute School of Public Health
Distinguished Scholar**
Caylee Chan

Senior Seminar Award
Abby Kennedy and Grace Pedersen

Chairs Award, Exercise and Nutrition Sciences
Payton Lynch

Community Leadership Award
Adam Dawer

GRADUATE EDUCATION

Milken Institute School of Public Health Dean's Award
Radha Vakkalagadda

MPH@GW

Director's Award
Maria Gracia Rodriguez Teves

Outstanding CE
Nora Singh

DOCTOR OF PUBLIC HEALTH

Director Award
Laura Santacrose





Grace Chen, Graduate Research Assistant (left)
Julia Blouin, PhD Candidate, Exercise Physiology and Applied Nutrition (center)
Simone Nixon, MPH'25 Candidate, Prevention and Community Health (right)

DEVELOPMENT

MILKEN INSTITUTE SPH COMMUNITY UNITES TO PROPEL PUBLIC HEALTH FORWARD IN 2023-24

Milken Institute SPH community members from around the world came together in 2023-24 to make an extraordinary impact on the school. Their generous contributions are helping shape the future of public health and fueling our mission to empower the next generation of leaders.

No matter the size, each donation is crucial in enabling the programs, initiatives, and experiences that prepare our students to make meaningful contributions in their fields. These gifts make it possible for us to foster the educational opportunities that equip our students to drive public health advancements on a global scale. Below are some key highlights from this year's exceptional philanthropic support.

DRIVING IMMEDIATE AND LONG-LASTING IMPACT

Thanks to the generosity of our donors, Milken Institute SPH students have gained life-changing opportunities that will have a lasting impact well beyond our campus. These contributions have created a ripple effect that extends globally, supporting both immediate student needs and the school's long-term strategic priorities. In FY 2024, the school experienced an extraordinary outpouring of support, raising nearly \$700,000 in scholarship funds from 302 donors. Alumni, students, faculty, and staff all came together to demonstrate their commitment to Milken Institute SPH, ensuring deserving students can access a world-class education and the hands-on experiences that set our school apart. These gifts continue to lay the foundation for the next generation of public health leaders to thrive across diverse and dynamic fields.

With the support of alumni, parents, and friends, Milken Institute SPH launched several new initiatives designed to enrich student development. A key highlight was the creation of the Chair's Health Equity Fund in the Department of Health Policy and Management, made possible by donor contributions. This fund empowers students to engage in practicums, internships, conferences, and other professional development opportunities. Through the collective efforts of many, this initiative was established with a \$100,000 endowment, a testament to the community's dedication to fostering future leaders in public health.



"We continue to witness the extraordinary ripple effect of public health, where each new graduate, discovery, and act of generosity has the power to impact countless lives. Thanks to the unwavering support of our alumni, parents, and friends, we've launched innovative programs, created state-of-the-art learning environments, and funded critical research. This generosity strengthens the Milken Institute School of Public Health, empowering our community to address pressing global health challenges and lead the way in shaping a healthier, more equitable world."

– Jackie Wood
Associate Vice President and Chief Development Officer,
Health & Medicine, Schools of Medicine and Health
Sciences, Nursing and Public Health.

BY THE NUMBERS: STRONG SUPPORT FROM THE COMMUNITY

This year saw a significant increase in support from our loyal, long-term donors, with 560 community members contributing in honor of our 27-year legacy of advancing public health. The number of alumni, parents, faculty, and friends who made financial contributions rose again, underscoring our community's deep commitment to the school's mission.



One standout moment was GIVING DAY, when the Milken Institute SPH community united to raise nearly \$50,000. Giving Day highlights the collective power of our alumni, faculty, staff, students, and friends to support public health education and research; 145 community members voiced their support by making a gift during the 24-hour event.

CELEBRATING MHA'S 60TH: \$1M IMPACT

Last year marked the conclusion of a year-long celebration in honor of the Master of Health Administration's 60th anniversary at GW. Alumni, faculty, students, and friends showed their support by helping us raise over \$1 million for the program. Scholarships, professional development experiences, and faculty support highlight some of the meaningful ways funds raised will be used to support the program.

In 2023, the George Washington University received a generous \$6 million gift from Michael and Lori Milken to establish two endowed professorships at the Milken Institute SPH. This transformative donation will help the school attract and retain top-tier faculty, furthering its mission to advance global public health.

As part of this endowment, Dr. Manya Magnus, a renowned expert in infectious disease epidemiology, has been named the inaugural Michael and Lori Milken Professor of Public Health. The second professorship, the Goldman Professor, will honor Dean Lynn Goldman, with the appointment to be announced later.

Dean Goldman expressed her gratitude for the Milken family's continued support: "Their generosity allows us to strengthen our faculty and expand our impact on public health research and education."



MICHAEL AND LORI MILKEN CREATE \$6 MILLION ENDOWMENT FOR PUBLIC HEALTH PROFESSORSHIPS AT THE MILKEN INSTITUTE SPH

This gift reinforces the Milken Institute SPH's leadership in addressing critical health issues and training the next generation of public health professionals.



THANK YOU TO OUR DONORS

Anonymous (15)	Annettee Aldous	Christopher N. Mores
A. Paul Kidd	Annie Roberts	Claire Summa
Abha Thapar	Ansir Junaid	Clara Aman
Abhishek Pravin Patel	Anushree Vichare	Clese Erikson
Abigail Drucis	Arianna Ames	Colleen McLaughlin
Abigail Slanski	Arnold Ventures	Colleen Sonosky
Abraham Ejigu	Arthur Seigel	Cora MacPherson
Adam Ciarleglio	Artisha Polk	Corinna Prisi
Adam Greene	Ashley Cellar	Craig Czelust
Adam Lewis	Ashley Darcy Mahoney	Crystal Arthur
Adara Citron	Aubrey Silverman	Damiana Andonova
Adjoavi Dayo	Barbara Braffett	Dana Woodruff
Adnan Hyder	Barbara Crystal	Daniel Nakamura
Ajay Yalamanchi	Barbara Kowalczyk	Danielle Dickson
Akintunde Akinseye	Ben Rogers	Danya Humaideh
Alan Funk	Benjamin Vucic	Dao Duong
Alana Miller	Beth Alexander	David Gitch
Aleathea Musah	Beth Roemer	David Makkers
Alexander Alonso	Beverly and Joseph Rainey	David Michaels
Alexander Burgman	Bonnie Panlasigui	David Solomon and Patrick Sanders
Alex Rainey	Bradley Richards	Jack Villani
Alexia Charles	Brigit Carter	Debra Bernat
Alexis Barnes	Brinda and Rakesh Chokshi	Deqa Mumim
Allison Stafford	Candace Owen	Derek Newcomer
Alyssa Jones	Candice Chen	Diane Britton
Amanda Kilfoil	Candice Tuthill	Dionne Stanley
Amani Ali	Canxida Corporate	Donald Weaver
Amita Vyas	Carol Kintner	Donna Ryan
Amittee Rosenfeld	Caroline Stahley	Dorcas Blue
Amy Lara	Catherine Stillwell Santamaria	Douglas W. Clark
Ana María del Río González	Chanelle Roberts	Duke University
Andrea Avalos	Charles Bakin	Durga Bhavani and Prasad Valay
Andrew Braun	Charles Stepanek	Ray Manahan
Andrew Flanagan and Alessandra Valerio	Charles Zollinger	Eli Greenspan
Andrew Maddocks	Chelsea Adams	Eliana Pierotti
Andrew Wiss	Chelsea Faso	Elise Quynh-Anh Vu
Anne and John Markus	Cheng-Chieh Hsu	Elizabeth Borkowski
Anne Creamer	Chidera Ejeh	Elizabeth Foggia
Anne Kress Monroe	Chioma Unegbu-Ogbonna	Elyse Braxton
Anne Morris Reid	Chitua Okoh	Emma K. Stapp
Anne Shachoy-Clark	Chloe Elie	Emma Sheffert
	Christine Gallagher	Emma Thompson

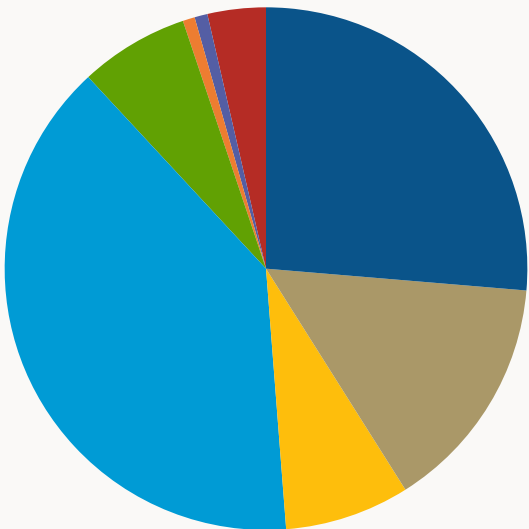
Eric Johnson	Jessica Faiz	Kimberly Thomas
Erik Kohler	Jessica Towns	Kristen and James Hatcher
Erika Carrillo	Jianna Durand	Kristen Rodrigues
Gene Migliaccio	Jillian Kaplan	Kwadwo Amoako
Evelyn Hoyer	Joanne Shin	Kyle Mickalowski
Fabiola Molina	Joel Teitelbaum	Lance Price and Cindy Liu
Frani Aufiero	John and Theresea Horvath	Lara Cartwright-Smith
Gabriela Lesiv	John Markus	Lara Tepper
Gary Sardon	John Sheridan	Larura Rogers
George M. Gray	John Stipanov and Cynthia Sherman	Laura Rabb
Gerda Gallop-Goodman	Jon Andrus and Susan Leavitt	Lauren McCarter
Gerrard Jolly	Jonathon Egan	Lauren McCarter
Gigi Baer	Jordyn Milou	Lawrence Lawson
Giovanni Imme	Joseph Hodges Sr.	Leah KupperSmith Deixler
Gnora Mahs	Judith Kirsch	Leah Masselink
Grace Pedersen	Judith Robbins	Lee and Deborah Mores
Gregory Wilson	Julee Snyder	Leigh Butler
Griffin Barriss	Julie Hyppolite	Leighton C. Ku
Guoqing Diao	Justin J. Ware	Leilani DeCourcy
H. Lee Kirk	K. Ryan Jensen	Leon Harris
Haley Rogers	Kaiser Permanente	Leslie Downey
Hans Irmer	Kalpana Vissa	Librada Estrada
Harrison Prot	Kamika Pichikul	Lily Speredelozzi
Harry Bradley	Kamwing Jair	Linda Wharton Boyd
Helen Snelgrove	Karen Collins	Lindsay Goodman
Holly Gill and James H. Lebovic	Karen McDonnell	Lizhao Ge
Holly Tobin	Karla Pollick	Lorens Helmchen
Iffie Ikem	Kate Taft	Lori Ann Thompson
Imani Marks	Katharyne Fuglaar	Lorien Abrams
Imran Bari	Katherine and Michael Thompson	Lucia Sanchez-Gonzales
Isabella Day	Katherine Chen	Lucy Lowenthal
Jackie Wood	Katherine Horton	Lynn Jones
Jacqueline Banos	Kathleen Farrell	Madeline Rice
James and Karen Cruickshank	Kathleen Harding	Maggie Hacker
James and Lisa Rogers	Kathleen Osgood	Manya Magnus
Jane H. Thorpe	Katrina Korn	Margaret Gorini
Jasmine Winston	Kayla Ringelheim	Margaret Marcotte
Jason Warfield	Keith Crandall	Mariam Chaudry
Jeffrey Bingenheimer	Kenneth Cohen	Mariam Gevorgyan
Jennifer and Richard Sauriol	Keri Apostle	Marie-Denise Belizaire-Green
Jennifer Boyer	Khadidiatou Ndiaye	Mark Edberg
Jennifer McEntire	Khusbu Patel	Mary Angela Miller
Jennifer Olsen	Kimberly Irby	Mary Holloway
Jennifer Pattershall-Geide	Kimberly Kramer	Marydale Debor
Jennifer Sacheck-Ward	Kimberly Murdaugh	Matthew Goodner
Jenny Ivett Hernandez	Kimberly Suttle	Maura Kelly-Yuoh

Maureen Byrnes	Peter Teitelman	Stephanie David
Maurice Lehman McCreary	Pfizer Inc.	Stephen Redmon
Maya Rezende Tsao	Prabha Raghavan	Steven Crystal
Medhanit Tekle	Precious Williams	Stiftung Auxilium
Megan Swain	Rachel Gunsalus	Susan Anenberg
Meghana Valay	Ralph Mitchell	Susan Stone
Meghana Vijaysimha	Ramin Asgary	Sydney Heli-Kaja Doyle
Melanie Sandquist	Rashaud Senior	Tanya Vogel
Melinda Hasbrouck	Rebecca Fallick	Tehreem Rehman
Melissa Bhikham Lilah	Rhonda Rundle	Terry OKeefe
Melissa Maitin-Shepard	Richard Banks	Theresa Guevara
Melissa Napolitano	Ricky Allen	Thomas Guterbock
Meredith Enish	Rinella Casseus	Thomas Howard
Michael Eppehimer	Robert Bonar	Thomas Kurtz
Michael Fine	Robert G. Wadleigh	Tiffany Kanae
Michael Kowalczyk	Robert Holloway	Timothy Parker
Michelle Pena	Robert Noonan	Tiyana Hossain
Minh Lam	Robert Zentmyer	Todd Cohen
Monica Ruiz	Robin Pereira	Tracy Rabin
Monyette Childs	Roena O'Donnell and Daniel O'Donnell	Tyson Werner
Moshe Shmuklarsky	Roger Bean	Vanessa Ferrel
Nancy Edwards	Rogers Li	Veronica Southerland
Natalie Diez	Ronald J. Waldman	Vi Le
Natasha Borrero	Ronan Hallowell	Victoria Pham
Natasha Durpee	Sadaf Ahmad	Wanda Montalvo
Natasha Kazeem	Sarah Ferrell	Wanda Nicholson
Ndeye Gningue	Sarah Jane Baird	Wayne Psek
Nelson Jr. and Debra Woodruff	Sascha Murillo	William Grant
Nicole Engle-DeMonaco	Schyler Cordova	William Melms
Nisha Sachdev	Scott Evans	William Suk
Noah Zidan	Scott Quinlan	Wolfgang Munar
Olga Acosta Price	Scott Weinstein	Yee Sun Fung
Onyinyechukwu Nwachukwu	Seble Frehywot	Yi Hsuan Wang
Pamela Pierson	Sharon Lam	Yury Metelski
Pamela Whitenack	Sharon White	Zakaridja Guiriansoro
Paras Shah	Shaun Reddy	Zakiya Chambers
Patricia Burk	Sioux Klinsky	Bill & Melinda Gates Foundation
Patricia Mactaggart	Siyu Xiao	McElhattan Foundation
Patrick C. McCarthy	Sloane Hurst	Novo Nordisk Pharmaceuticals Inc.
Patti Plaza	Sophie Gelfand	The California Endowment
Paul Ndebele	Stacie DeRamus	The Commonwealth Fund
Paulo Romeo Pontemayor	Stanley Grube	The J. Willard and Alice S. Marriott Foundation
Penny McMilan-Hughes	Starck Starck	The Kresge Foundation
Peter and Minerva Pascual	Stefan Lupu	The Robert Wood Johnson Foundation
Peter LaPuma		

Although great care has been taken to list all names accurately, please notify Milken Institute School of Public Health of any errors or omissions by contacting 202-994-4196 or by emailing gwsphgiving@gwu.edu.

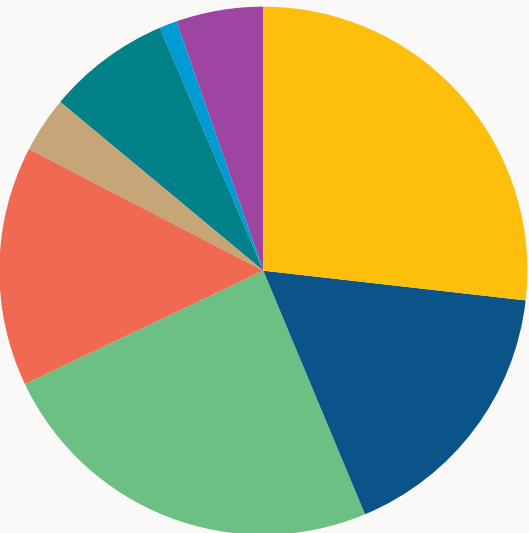
FINANCIAL REPORT

FISCAL YEAR 2024



REVENUE (m)

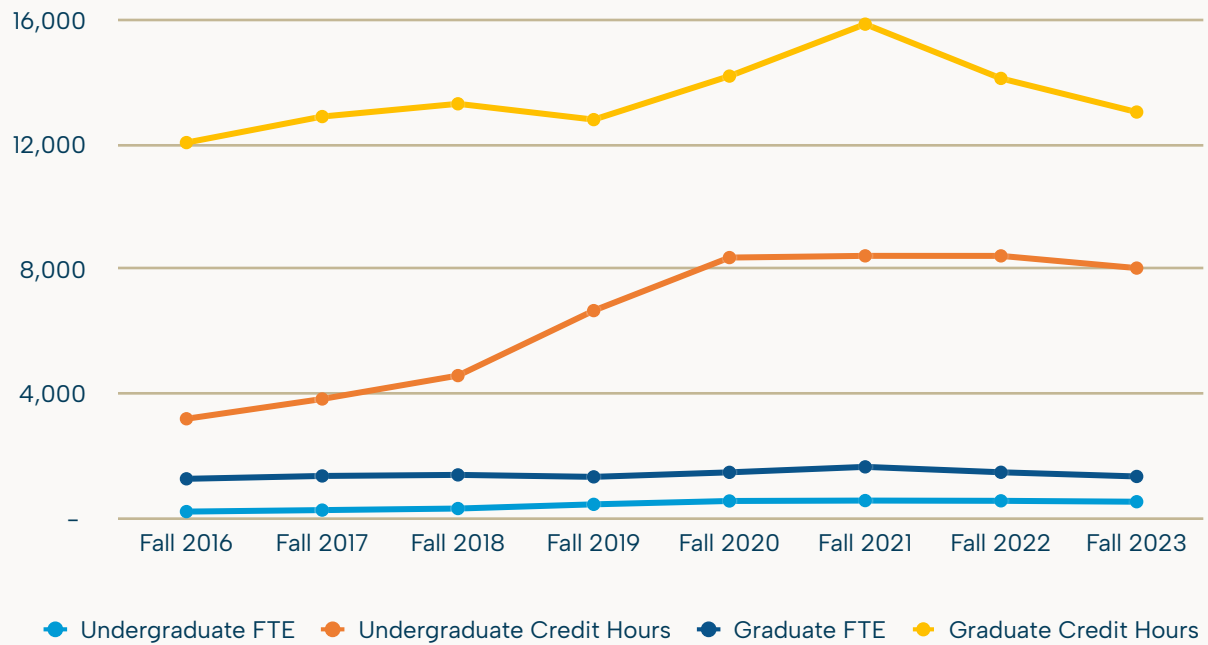
Research - excl BSC	\$	46.0	26%
Research - BSC	\$	25.7	15%
Research - Indirect	\$	13.5	8%
Graduate Tuition & Fees	\$	68.7	39%
Undergraduate Tuition & Fees	\$	11.8	7%
Gifts & Pledges	\$	1.3	1%
Other Revenue	\$	1.4	1%
Endowments	\$	6.3	4%
TOTAL	\$	174.7	100%



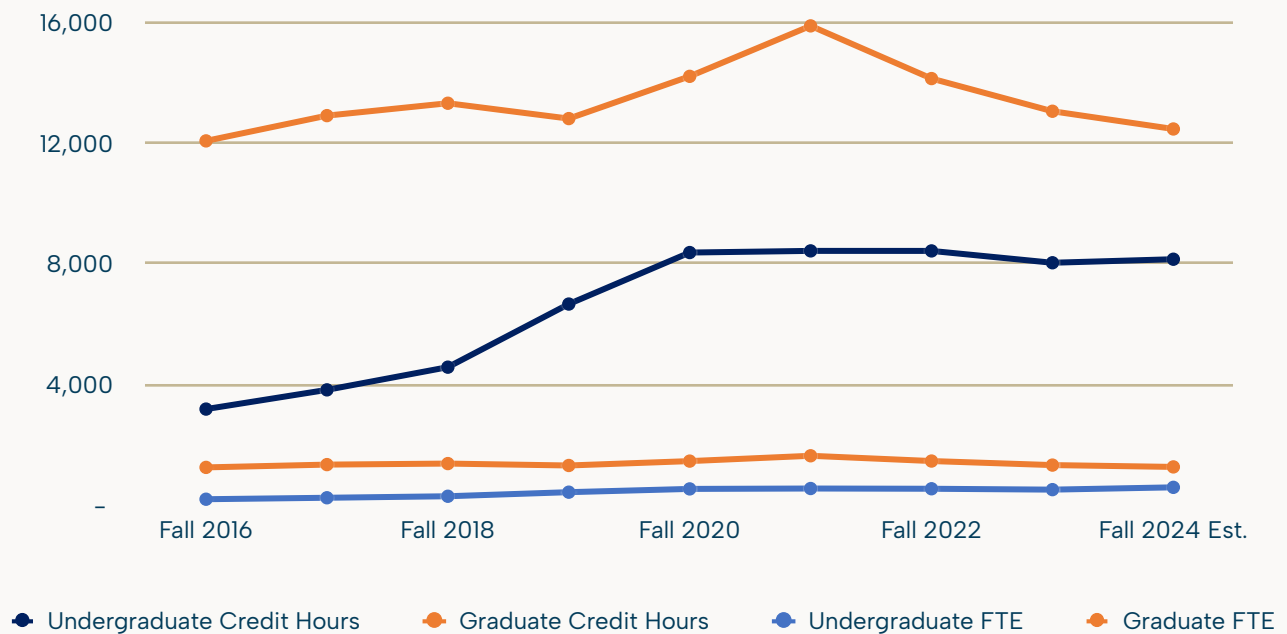
EXPENDITURES (m)

Compensation	\$	44.7	26.8%
Compensation - Research	\$	28.2	16.9%
Other Expenses - Research	\$	40.4	24.2%
Operations	\$	24.5	14.7%
Occupancy	\$	5.7	3.4%
Student Support	\$	12.6	7.6%
Student Support - Research	\$	1.8	1.1%
Allocations - Net	\$	8.9	5.3%
TOTAL	\$	166.8	100%

Unduplicated Student FTE, FY17-24



Credit Hours and Unduplicated FTE







Milken Institute School of Public Health

THE GEORGE WASHINGTON UNIVERSITY

publichealth.gwu.edu



[@GWpublichealth](https://www.instagram.com/GWpublichealth)

gwsphweb@gwu.edu

202.944.7400



Printed on recycled paper
March 2025